

Food Production Per Capita Index (1979-81 = 100)

| | 1980 | 1985 | 1986 | 1987 | 1988 | 1989 | 1990 |
|------------|-------|--------|-------|-------|-------|-------|------|
| Angola | 101 a | 102 c* | 87 c | 87 d | 85 ac | 80 c | |
| Botswana | 88 a | 96 c* | 78 c | 75 a | 75 c | 69 c | |
| Burundi | 97 a | 106 c* | 97 c | | 102 a | 88 c | |
| Comoros | 105 a | | | | 97 a | | |
| Ethiopia | 99 a | 97 c* | 88 c | | 94 a | 91 c | |
| Kenya | 98 a | 99 c* | 93 c | 102 b | 90 a | 103 c | |
| Lesotho | 98 a | 93 c* | 79 c | | 86 a | 72 c | |
| Madagascar | 102 a | 112 c* | 96 c | | 91 a | 92 c | |
| Malawi | 98 a | 105 c* | 88 c | | 83 a | 86 c | |
| Mauritius | 87 a | 105 c* | 107 c | | 99 a | 94 c | |
| Mozambique | 100 a | 98 c* | 85 c | | 84 a | 82 c | |
| Namibia | 99 a | | | | 98 a | 92 c | |
| Rwanda | 98 a | 106 c* | 87 c | | 75 a | 72 c | |
| Sao Tome | 93 a | 68 a | | | | | |
| Seychelles | | | | | | | |
| Somalia | 100 a | 102 c* | 91 c | | 98 a | 97 c | |
| Swaziland | 103 a | | | 102 a | | | |
| Tanzania | 97 a | 108 c* | 92 c | | 86 a | 90 c | |
| Uganda | 98 a | 125 c* | 129 c | 121 d | 82 a | 85 c | |
| Zambia | 103 a | | 96 c | | 92 a | 96 c | |
| Zimbabwe | 91 a | | 100 c | 66 b | 97 a | 94 c | |

Sources:

- a) Statistics on Children in UNICEF-Assisted Countries (1990-91)
- b) UNICEF Annual Reports 1990
- c) The State of the World's Children (1988-91)
- d) World Development Report (1987-90)
- e) Sub-Saharan Africa: From Crisis to Sustainable Growth
- f) Regional Information System data (from UNICEF country offices)
- g) UNESCO Statistical Yearbook 1990

Symbols:

- * From a year other than the year shown
- (.) Less than half the unit shown
- + Estimate

Household Income Spent on All Food/Cereals (%)

1980-1985

| | |
|------------|----------|
| Angola | |
| Botswana | 35 15 a* |
| Burundi | |
| Comoros | 50 24 c |
| Ethiopia | 42 18 a* |
| Kenya | |
| Lesotho | 58 22 a* |
| Madagascar | 55 28 a* |
| Malawi | 20 4 a* |
| Mauritius | |
| Mozambique | |
| Namibia | 29 10 a* |
| Rwanda | |
| Sao Tome | |
| Seychelles | |
| Somalia | |
| Swaziland | — 30 b |
| Tanzania | 62 30 a* |
| Uganda | |
| Zambia | 50 13 a* |
| Zimbabwe | 43 9 a* |

- Sources:
- a) Statistics on Children in UNICEF-Assisted Countries (1990-91)
 - b) UNICEF Annual Reports 1990
 - c) The State of the World's Children (1988-91)
 - d) World Development Report (1987-90)
 - e) Sub-Saharan Africa: From Crisis to Sustainable Growth
 - f) Regional Information System data (from UNICEF country offices)
 - g) UNESCO Statistical Yearbook 1990

Household Income Spent on Health/Education (%)

1980-1985

| | |
|------------|--------|
| Angola | |
| Botswana | 4 9 a |
| Burundi | |
| Comoros | 3 2 a |
| Ethiopia | — 2 a |
| Kenya | |
| Lesotho | 1 6 a |
| Madagascar | 3 4 a |
| Malawi | 13 5 a |
| Mauritius | |
| Mozambique | |
| Namibia | |
| Rwanda | 4 4 a |
| Sao Tome | |
| Seychelles | |
| Somalia | |
| Swaziland | |
| Tanzania | 1 5 a |
| Uganda | |
| Zambia | 5 6 a |
| Zimbabwe | — 8 a |

- Symbols: * From a year other than the year shown
 (.) Less than half the unit shown
 + Estimate

Access to Health Services (% population) (total/urban/rural)

| | 1980 | 1985 | 1986 | 1987 | 1988 | 1989 | 1990 |
|------------|------------|---------------|--------------|---------------|-------------|----------|-------------|
| Angola | 89 100 8 a | | 30 — — c | | | | |
| Botswana | 20 — — a | | 89 100 85 c | | | | |
| Burundi | | 61 — — a | | | | | |
| Comoros | | 82 — — a | | 83 — — b | | 83 — — b | |
| Ethiopia | | 42 — — a | 46 — — a | | | | |
| Kenya | | 80 — — a | | 42 — — b | | | 46 100 39 b |
| Lesotho | | | | | | | |
| Madagascar | 60 — — ac | | 56 — — ac | | | | |
| Malawi | | 80 — — a | | | | | |
| Mauritius | 60 — — a | 100 100 100 a | | 100 100 100 b | | | |
| Mozambique | 30 — — a | | 39 100 30 c* | | 39 100 30 a | | |
| Namibia | | | | | | | |
| Rwanda | 27 60 25 a | | | | | | |
| Sao Tome | | 80 100 69 a | | | | | |
| Seychelles | | 100 — — a* | | | | | |
| Somalia | — — 15 a | 27 50 15 a* | | | | | |
| Swaziland | | 80 — — b | | 80 — — a | | | |
| Tanzania | 76 99 72 a | | | | | | |
| Uganda | 61 90 57 a | | | 57 — — b* | | | |
| Zambia | | 75 100 50 a* | | | | | |
| Zimbabwe | | 71 100 62 a* | | | | | |

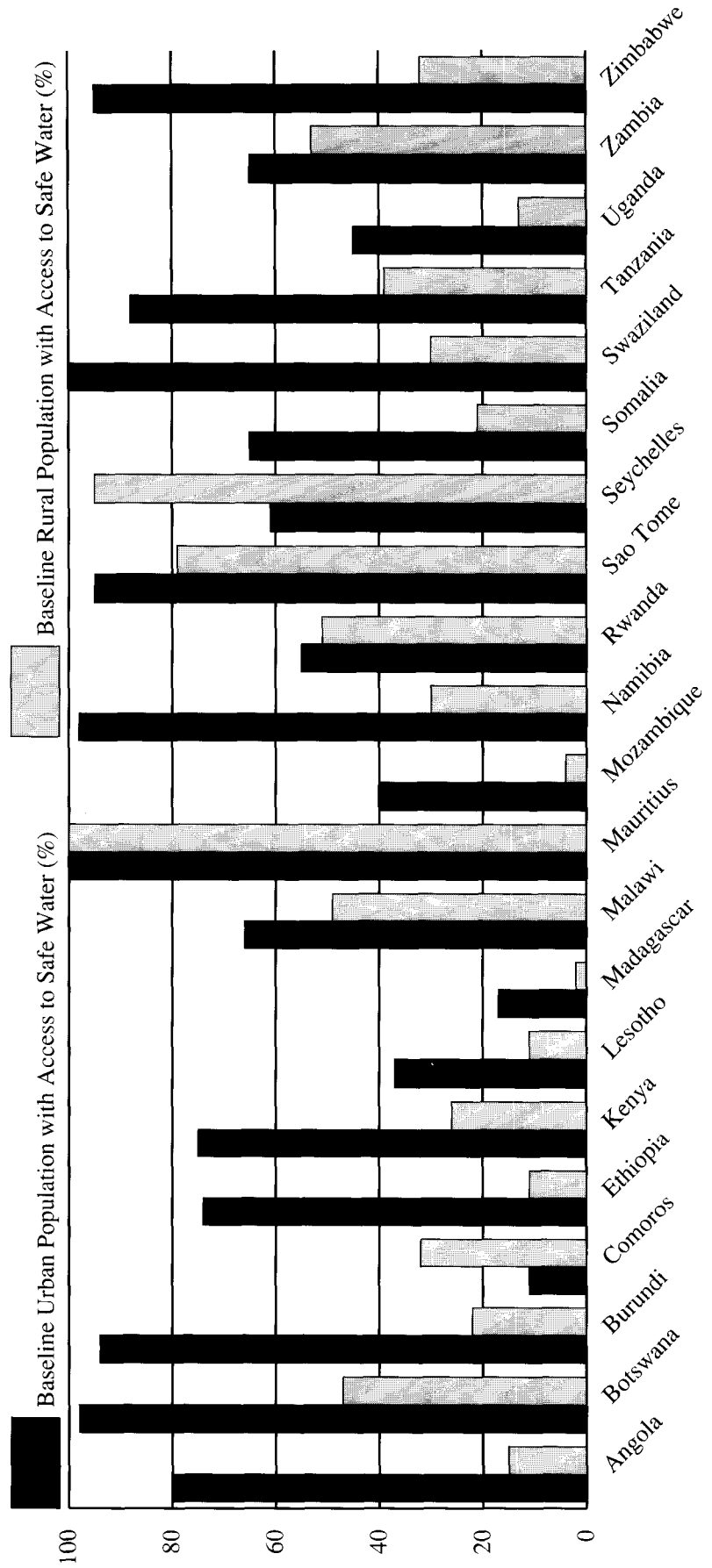
Sources:

- a) Statistics on Children in UNICEF-Assisted Countries (1990-91)
- b) UNICEF Annual Reports 1990
- c) The State of the World's Children (1988-91)
- d) World Development Report (1987-90)
- e) Sub-Saharan Africa: From Crisis to Sustainable Growth
- f) Regional Information System data (from UNICEF country offices)
- g) UNESCO Statistical Yearbook 1990

Symbols:

- * From a year other than the year shown
- () Less than half the unit shown
- + Estimate

GOAL 2000: Universal Access to Safe Drinking Water



Access to Safe Water (% population) (total/urban/rural)

| | 1980 | 1985 | 1986 | 1987 | 1988 | 1989 | 1990 |
|------------|-------------|---------------|---------------|---------------|------------|------------|------|
| Angola | 21 85 10 af | 30 87 15 a | 30 85 15 c | 32 90 12 f | — 80 15 f | | |
| Botswana | 23 90 20 af | 65 98 47 c | 54 84 46 ac | 57 98 47 f | | | |
| Burundi | 28 53 20 af | 26 98 21 af | | 39 94 22 f | | — 11 32 b | |
| Comoros | 26 85 15 af | 6 80 5 f | 16 69 9 f | 20 11 32 bf | 16 74 11 a | | |
| Ethiopia | 14 37 11 cf | 30 61 21 f | 28 61 21 f | 28 61 21 f | 35 75 26 b | 36 75 26 b | |
| Kenya | 20 80 7 a | 36 65 30 cf | | 14 37 11 f | | | |
| Lesotho | 41 77 37 af | 32 81 17 a | 23 73 9 f | 18 — — f | 18 17 2 f | | |
| Madagascar | 95 95 95 af | 56 97 50 af | 51 66 49 f | 51 66 49 f | | | |
| Malawi | 13 50 7 a | 100 100 100 a | 100 100 100 f | 100 100 100 b | | | |
| Mauritius | 16 38 9 a | 16 38 9 a | | 13 — — f | 16 40 4 f | | |
| Mozambique | 64 98 30 f* | 64 98 30 f* | | | | | |
| Namibia | 50 79 48 af | 50 79 48 af | | 59 55 60 f | 51 55 51 f | | |
| Rwanda | 55 48 55 af | | | | | | |
| Sao Tome | 82 95 79 a* | | | | | | |
| Seychelles | 79 — — af | 83 — 95 af | 83 — — f | | | | |
| Somalia | 32 60 20 af | 34 58 22 af | | 36 65 21 f | | | |
| Swaziland | 43 75 35 af | 34 100 7 f | | 50 100 30 a | | | |
| Tanzania | 49 90 41 af | 56 90 42 af | | 50 88 39 f | | | |
| Uganda | — — 5 f | 20 37 18 a | | 16 45 13 f | | | |
| Zambia | 42 — — f | 59 76 41 af | 47 65 53 f | 47 65 53 f | | | |
| Zimbabwe | 52 — — af | — — 32 a | 52 — — f | 52 — — f | | | |

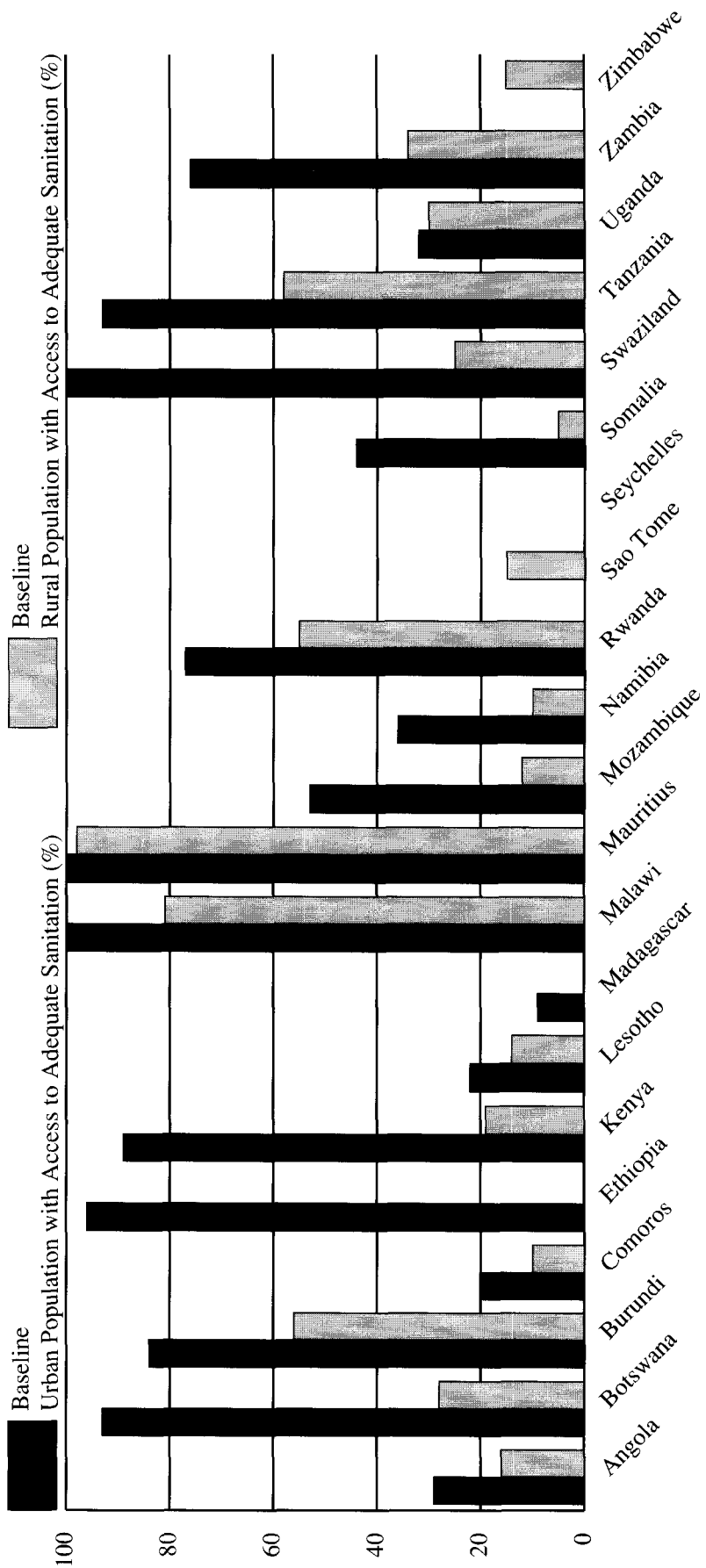
Sources:

- a) Statistics on Children in UNICEF-Assisted Countries (1990-91)
- b) UNICEF Annual Reports 1990
- c) The State of the World's Children (1988-91)
- d) World Development Report (1987-90)
- e) Sub-Saharan Africa: From Crisis to Sustainable Growth
- f) Regional Information System data (from UNICEF country offices)
- g) UNESCO Statistical Yearbook 1990

Symbols:

- * From a year other than the year shown
- (.) Less than half the unit shown
- + Estimate

GOAL 2000: Universal Access to Adequate Sanitation



Access to Adequate Sanitation (% population) (total/urban/rural)

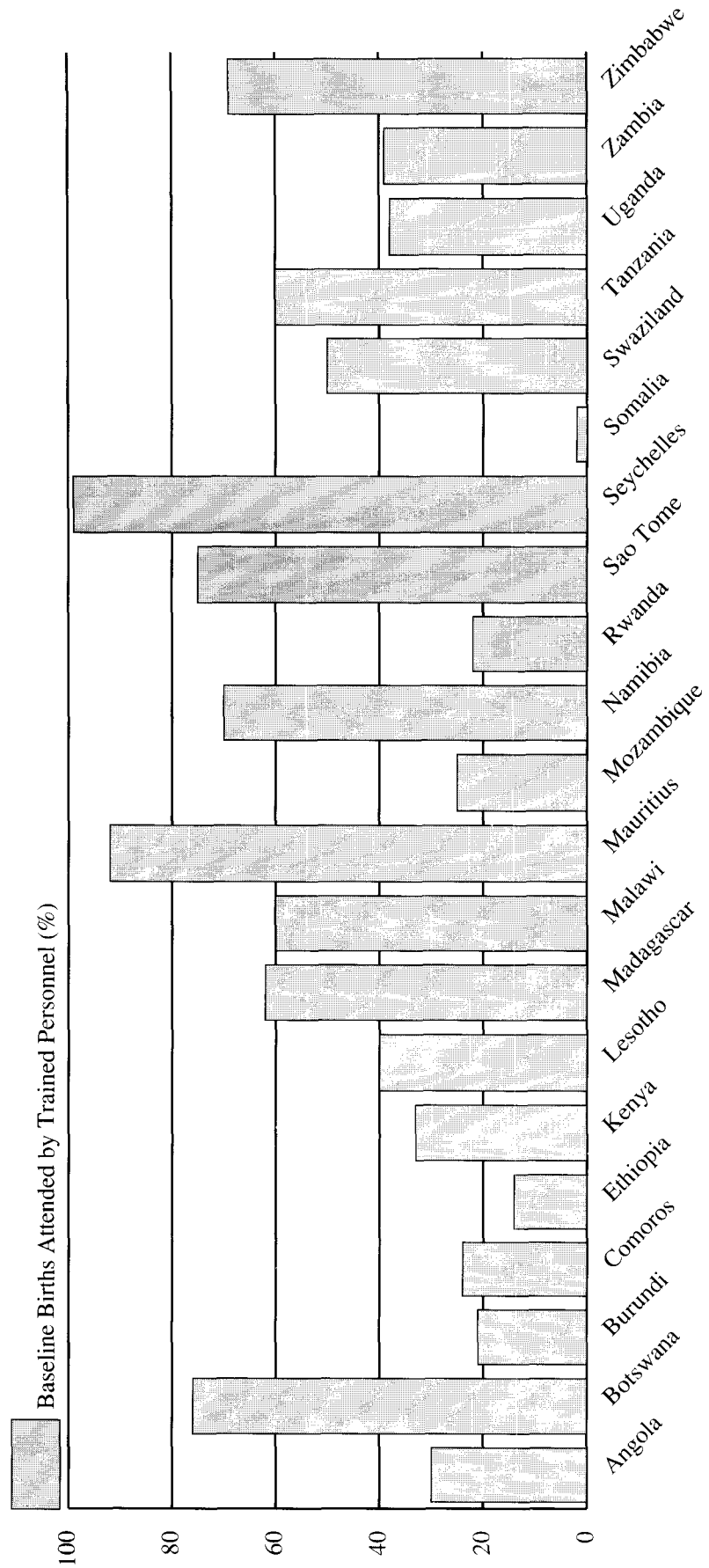
| | 1980 | 1985 | 1986 | 1987 | 1988 | 1989 | 1990 |
|------------|-------------|-------------|------------|-------------|-------------|-------------|------|
| Angola | 22 40 15 a | 19 29 16 a | | | | | |
| Botswana | | | 42 93 28 a | | | | |
| Burundi | 35 40 35 a | 58 84 56 a | | | | | |
| Comoros | | | | — 20 10 b | | — 20 10 b | |
| Ethiopia | | — 96 — a | | | | | |
| Kenya | 34 89 19 a | | | | | | |
| Lesotho | 14 13 14 a | 15 22 14 a | | | | | |
| Madagascar | — 9 — a | | | | | | |
| Malawi | 84 100 81 a | | | | | | |
| Mauritius | 94 100 90 a | 92 100 86 a | | 92 100 86 b | 99 100 98 b | 99 100 98 b | |
| Mozambique | | 21 53 12 a | | | | | |
| Namibia | | 23 36 10 f* | | | | | |
| Rwanda | 51 60 50 a | 57 77 55 a | | | | | |
| Sao Tome | | — — 15 a | | | | | |
| Seychelles | | | | | | | |
| Somalia | | 18 44 5 a | | | | | |
| Swaziland | | 47 100 25 a | | | | | |
| Tanzania | | 68 93 58 a | | | | | |
| Uganda | | 30 32 30 a | | 30 32 30 b | | | |
| Zambia | | 56 76 34 a | | | | | |
| Zimbabwe | | — — 15 a | | | | | |

Sources:

- a) Statistics on Children in UNICEF-Assisted Countries (1990-91)
- b) UNICEF Annual Reports 1990
- c) The State of the World's Children (1988-91)
- d) World Development Report (1987-90)
- e) Sub-Saharan Africa: From Crisis to Sustainable Growth
- f) Regional Information System data (from UNICEF country offices)
- g) UNESCO Statistical Yearbook 1990

Symbols: * From a year other than the year shown
(.) Less than half the unit shown
+ Estimate

GOAL 2000: Universal Access of Pregnant Women to Trained Attendants During Child Birth



Births Attended by Trained Personnel (%)

| | 1980 | 1985 | 1986 | 1987 | 1988 | 1989 | 1990 |
|------------|-------|--------|-------|-------|-------|------|-------|
| Angola | | 15 acd | | | | 30 f | |
| Botswana | | 52 c | | | 77 a | 76 b | |
| Burundi | 12 f | 21 a | | 21 f | | | |
| Comoros | 24 a | 20 b* | | | 24 a | | |
| Ethiopia | | 58 c* | | | 14 a | | |
| Kenya | | 28 a* | | 33 b | | | |
| Lesotho | | 28 c* | | | 40 a | | |
| Madagascar | | 62 af* | | | | | |
| Malawi | | 59 c* | 38 f | 41 f | 45 a* | 60 f | |
| Mauritius | 90 a* | 84 c* | 98 f | 90 b | 85 a* | 92 b | |
| Mozambique | | 28 c* | | | 25 af | | |
| Namibia | | | | | | | 70 f* |
| Rwanda | 5 f | 21 f | 32 f | 32 f | 22 a | | |
| Sao Tome | | | | 86 f | | 75 f | |
| Seychelles | | 99 a* | | | | | |
| Somalia | 11 a* | 2 c* | | | 2 a | | |
| Swaziland | | 50 a | | | | | |
| Tanzania | | 74 c* | 74 f | | 60 a | | |
| Uganda | | | 45 a* | 45 b* | | | |
| Zambia | | | 39 a | | | | |
| Zimbabwe | 37 a | 69 a* | | | | | |

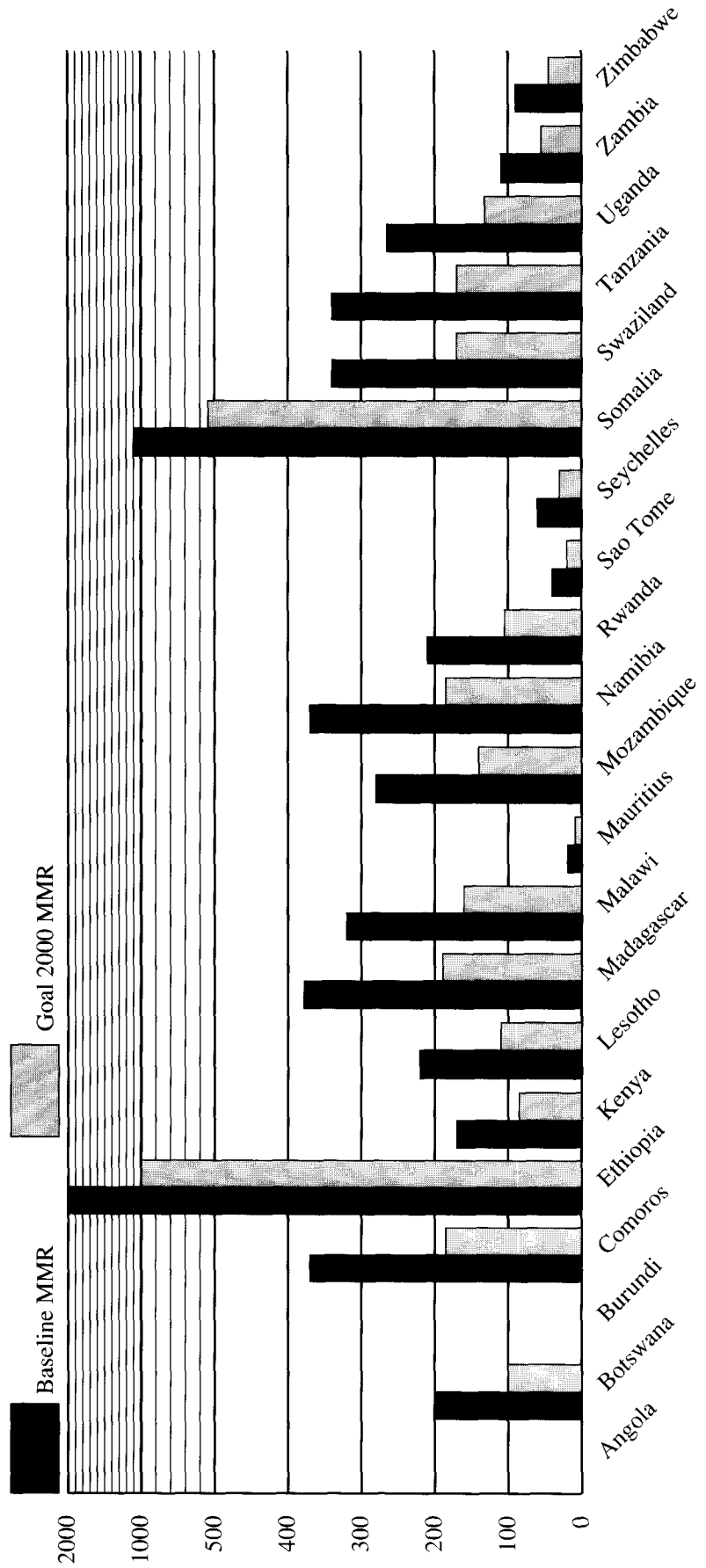
Sources:

- a) Statistics on Children in UNICEF-Assisted Countries (1990-91)
- b) UNICEF Annual Reports 1990
- c) The State of the World's Children (1988-91)
- d) World Development Report (1987-90)
- e) Sub-Saharan Africa: From Crisis to Sustainable Growth
- f) Regional Information System data (from UNICEF country offices)
- g) UNESCO Statistical Yearbook 1990

Symbols:

- * From a year other than the year shown
- (.) Less than half the unit shown
- + Estimate

GOAL 2000: Reduction of Maternal Mortality Rates by One-Half of 1990 Levels



Maternal Mortality Rate (deaths of women from pregnancy-related causes per 100,000 live births)

| | 1980 | 1985 | 1986 | 1987 | 1988 | 1989 | 1990 |
|------------|--------|--------|-------|--------|-------|---------|------|
| Angola | | | | | | | |
| Botswana | 250 a | 300 f | | | 200 f | 200 b | |
| Burundi | | | | 370 b | | | |
| Comoros | 2000 f | 2000 f | | | | 370 b | |
| Ethiopia | 168 f | | | 170 f | | | |
| Kenya | | 220 b* | | | | | |
| Lesotho | 240 a* | 300 f | 300 f | 350 b | | 378 b | |
| Madagascar | 250 f | 100 a | | 250 f | | 320 f | |
| Malawi | 52 f | 100 a | | 99 f | 45 f | 19 b | |
| Mauritius | 300 f* | | | | 280 f | | |
| Mozambique | | | | 371 b* | | 370 af* | |
| Namibia | | | | | | | |
| Rwanda | 210 f | | | | | | |
| Sao Tome | | 80 f | 70 f | 100 f | 40 f | | |
| Seychelles | | | | 60 a | | | |
| Somalia | 1100 f | 1100 f | | | | | |
| Swaziland | 370 c* | 340 a | | | | | |
| Tanzania | | | 340 b | | | | |
| Uganda | 300 f | 377 f | 391 f | 265 b | | | |
| Zambia | 109 f | | 156 f | 110 f | | | |
| Zimbabwe | 145 f | | | 150 f | 90 b | | |

Sources:

- a) Statistics on Children in UNICEF-Assisted Countries (1990-91)
- b) UNICEF Annual Reports 1990
- c) The State of the World's Children (1988-91)
- d) World Development Report (1987-90)
- e) Sub-Saharan Africa: From Crisis to Sustainable Growth
- f) Regional Information System data (from UNICEF country offices)
- g) UNESCO Statistical Yearbook 1990

Symbols:

- * From a year other than the year shown
- (.) Less than half the unit shown
- + Estimate

IMMUNIZATION GOALS FOR THE YEAR 2000:

Maintenance of a High Rate of Immunization Coverage
(at least 90% of children under one)

Against Tuberculosis, Diphtheria, Pertussis, Tetanus, Measles and Poliomyelitis
and Against Tetanus for Women of Child-Bearing Age

Global Elimination of Neonatal Tetanus (by the year 1995)

Global Elimination of Poliomyelitis

Reduction by 95% of Measles Deaths and Reduction by 90% of Measles Cases
(compared to pre-immunization levels) (by the year 1995)

One Year Olds Immunized against Tuberculosis (%)

| | 1980 | 1985 | 1986 | 1987 | 1988 | 1989 | 1990 |
|------------|-------|-------|-------|--------|--------|-------|-------|
| Angola | 47 f | 30 f | 59 cf | 29 cf | 32 acf | 46 f | 47 f+ |
| Botswana | 91 f | 68 af | 67 f | 99 ac | 99 ac | 98 b | 92 f |
| Burundi | 65 f | 59 af | 80 cf | 89 acf | 66 a | 100 f | 97 f |
| Comoros | | 56 af | 51 f | 97 af | 95 a | 95 b | 99 f |
| Ethiopia | 10 a* | 11 af | 12 cf | 28 af | 27 a | 69 b | 57 f |
| Kenya | | 82 af | 80 cf | 86 a | 90 a | 80 f | 80 f |
| Lesotho | 81 a* | 86 af | 91 f | 91 af | 90 a | 74 b | 97 f |
| Madagascar | 13 f | 31 af | 42 f | 52 af | 62 a | 79 b | 67 f* |
| Malawi | 86 a* | 92 a | 92 f | 79 a | 90 af | 96 f | 97 f |
| Mauritius | 98 f | 79 a | 87 f | 87 acf | 88 a | 90 b | 94 f |
| Mozambique | 46 a* | 47 a | | 59 ac | 49 af | 51 b | 59 f* |
| Namibia | | | | | | | 85 f |
| Rwanda | 51 f | 83 af | 92 f | 92 a | 91 af | | 92 f |
| Sao Tome | 95 a* | 74 af | 90 f | 90 af | 88 a | 88 f | 94 f |
| Seychelles | 67 a* | 92 af | 98 f | 98 af | | | 98 f |
| Somalia | 30 f | 30 a | 33 f | 33 a | 39 a | 31 f | |
| Swaziland | 59 a* | 79 af | 74 f | 91 af | 95 a | 96 f | |
| Tanzania | 84 f | 93 af | 82 cf | 95 acf | 93 a | | 92 f |
| Uganda | 18 f | 37 af | 51 cf | 74 acf | 77 a | | 63 f+ |
| Zambia | 42 f | 82 f | 92 f | 92 acf | 92 a | | 97 f |
| Zimbabwe | 64 f | 76 a | 44 f | 86 acf | 89 a | | 71 f |

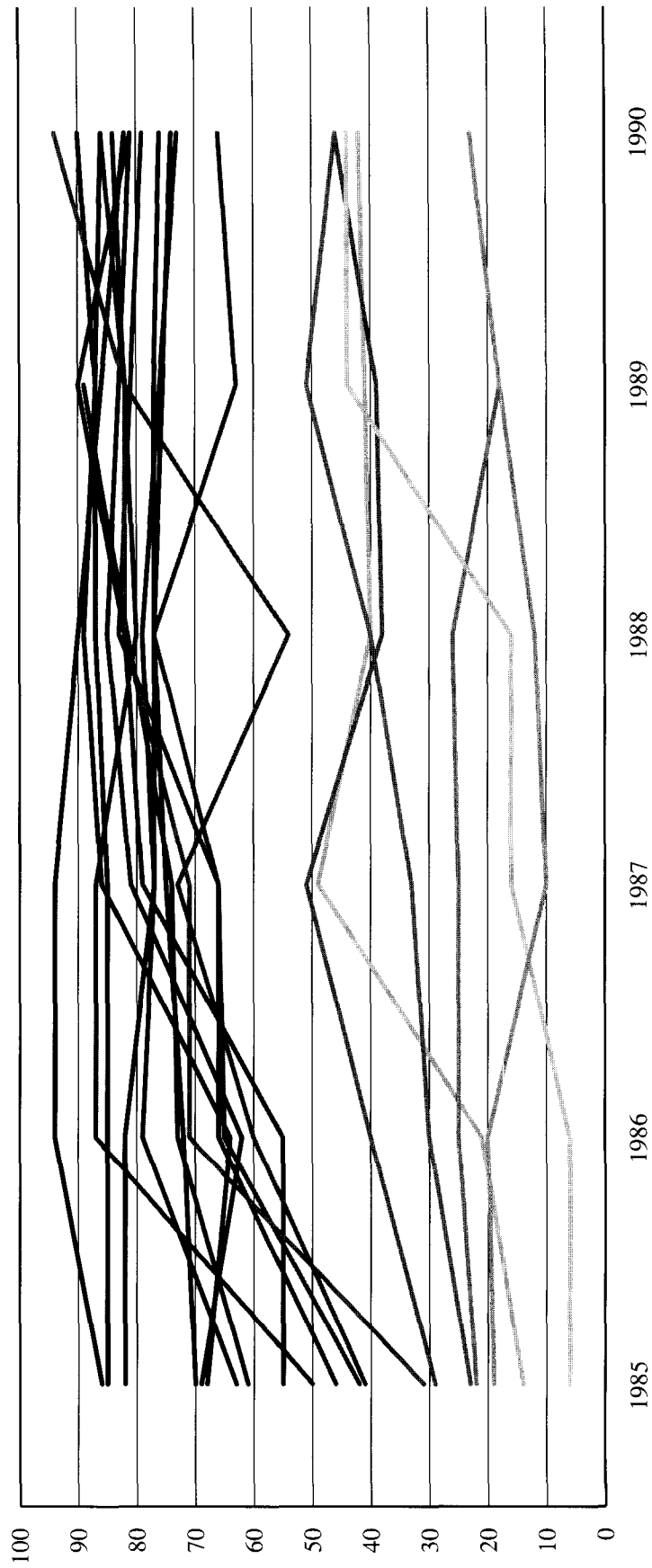
Sources:

- a) Statistics on Children in UNICEF-Assisted Countries (1990-91)
- b) UNICEF Annual Reports 1990
- c) The State of the World's Children (1988-91)
- d) World Development Report (1987-90)
- e) Sub-Saharan Africa: From Crisis to Sustainable Growth
- f) Regional Information System data (from UNICEF country offices)
- g) UNESCO Statistical Yearbook 1990

Symbols:

- * From a year other than the year shown
- (.) Less than half the unit shown
- + Estimate

Percentage of One Year Olds Fully Immunized Against Diphtheria, Pertussis and Tetanus (1985-1990)
(all ESA countries except Namibia)



One Year Olds Fully Immunized Against Diphtheria/Pertussis/Tetanus (DPT3) (%)

| | 1980 | 1985 | 1986 | 1987 | 1988 | 1989 | 1990 |
|------------|-------|-------|-------|--------|--------|-------|-------|
| Angola | 9 f | 19 f | 20 cf | 10 cf | 12 acf | 18 f | 23 f+ |
| Botswana | 70 f | 68 af | 64 cf | 86 acf | 89 ac | 87 b | 86 f |
| Burundi | 38 f | 41 af | 60 cf | 73 acf | 54 a | 82 f | 86 f |
| Comoros | | 31 af | 71 f | 71 af | 82 a | 82 b | 94 f |
| Ethiopia | 6 a* | 6 af | 6 f | 16 af* | 16 a | 44 b | 44 f |
| Kenya | | 70 af | 72 cf | 75 a | 77 a | 74 f | 74 f |
| Lesotho | 56 a* | 82 af | 82 f | 77 af | 77 a | 77 b | 76 f |
| Madagascar | 35 f | 23 af | 30 cf | 33 af | 40 a | 51 b | 46 f* |
| Malawi | 66 a* | 55 a | 55 a | 79 a | 82 af | 90 f | 81 f |
| Mauritius | 97 f | 85 a | 85 f | 85 af | 87 a | 87 b | 90 f |
| Mozambique | 56 a | 29 a | | 51 a* | 38 af | 39 b | 46 f* |
| Namibia | | | | | | | 53 f |
| Rwanda | 17 f | 50 af | 87 f | 87 a | 80 af | | 84 f |
| Sao Tome | 42 a* | 42 af | 65 f | 66 af | 77 a | 63 f | 66 f |
| Seychelles | 13 a* | 86 a | 94 f | 94 af | | | 82 f |
| Somalia | 22 f | 22 a | 25 f | 25 a* | 26 a | 18 f | |
| Swaziland | 30 a* | 61 af | 73 f | 74 af | 37 a | 89 bf | |
| Tanzania | 58 f | 69 af | 62 cf | 81 acf | 85 a | | 81 f |
| Uganda | 9 f | 14 af | 21 cf | 39 acf | 40 a | | 42 f* |
| Zambia | 71 f | 46 f | 66 f | 66 af | 83 a | | 79 f |
| Zimbabwe | 39 f | 63 af | 79 f | 77 acf | 79 a | | 73 f |

Sources:

- a) Statistics on Children in UNICEF-Assisted Countries (1990-91)
- b) UNICEF Annual Reports 1990
- c) The State of the World's Children (1988-91)
- d) World Development Report (1987-90)
- e) Sub-Saharan Africa: From Crisis to Sustainable Growth
- f) Regional Information System data (from UNICEF country offices)
- g) UNESCO Statistical Yearbook 1990

Symbols:

- * From a year other than the year shown
- (.) Less than half the unit shown
- + Estimate

One Year Olds Fully Immunized Against Poliomyelitis (OPV) (%)

| | 1980 | 1985 | 1986 | 1987 | 1988 | 1989 | 1990 |
|------------|-------|-------|-------|--------|--------|------|------|
| Angola | 7 f | 13 f | 58 cf | 16 cf | 13 acf | 19 f | |
| Botswana | 45 f | 67 af | 60 f | 88 acf | 89 ac | 88 b | 82 f |
| Burundi | 6 f | 43 af | 61 cf | 76 acf | 54 a | 82 f | |
| Comoros | | 31 af | 12 f | 73 af | 78 a | 78 b | |
| Ethiopia | 7 a* | 6 af | 6 f | 16 f | 16 f | 44 b | |
| Kenya | | 70 af | 72 cf | 75 a | 78 a | | 71 f |
| Lesotho | 54 a* | 80 af | 80 f | 77 af | 77 a | 81 b | 75 f |
| Madagascar | 3 f | 20 af | 24 f | 33 af | 38 a | 47 b | |
| Malawi | 68 a* | 50 a | 50 f | 79 a | 80 af | 89 f | 79 f |
| Mauritius | 97 f | 85 a | 85 f | 85 af | 87 a | 88 b | |
| Mozambique | 32 a* | 25 a | 38 a* | 38 af | 39 b | | |
| Namibia | | | | | | | |
| Rwanda | 15 f | 56 af | 86 f | 86 a | 78 af | | 83 f |
| Sao Tome | 48 a* | 44 af | 66 f | 65 af | 72 a | 63 f | |
| Seychelles | 16 a* | 86 a | 94 f | 94 af | | | |
| Somalia | 22 f | 22 a | 25 f | 25 a* | 26 a | 57 f | |
| Swaziland | 22 a* | 59 af | 72 f | 74 af | 29 a | 89 b | |
| Tanzania | 56 f | 65 af | 62 f | 80 af | 82 a | | 76 f |
| Uganda | 8 f | 13 af | 21 cf | 40 af | 41 a | | |
| Zambia | 21 f | 46 f | 61 f | 66 af | 81 a | | 77 f |
| Zimbabwe | 38 f | 63 af | 81 f | 77 acf | 79 a | | 72 f |

Sources:

- a) Statistics on Children in UNICEF-Assisted Countries (1990-91)
b) UNICEF Annual Reports 1990
c) The State of the World's Children (1988-91)
d) World Development Report (1987-90)
e) Sub-Saharan Africa: From Crisis to Sustainable Growth
f) Regional Information System data (from UNICEF country offices)
g) UNESCO Statistical Yearbook 1990

Symbols:

- * From a year other than the year shown
(.) Less than half the unit shown
+ Estimate

One Year Olds Immunized Against Measles (%)

| | 1980 | 1985 | 1986 | 1987 | 1988 | 1989 | 1990 |
|------------|-------|-------|-------|--------|--------|-------|-------|
| Angola | 17 f | 44 a | 44 cf | 55 cf | 56 acf | 42 f | 38 f+ |
| Botswana | 65 f | 68 af | 62 cf | 91 acf | 83 ac | 80 b | 78 f |
| Burundi | 30 f | 36 af | 57 cf | 58 acf | 41 a | 73 f | 75 f |
| Comoros | | 18 af | 19 f | 71 af | 85 a | 85 b | 87 f |
| Ethiopia | 7 a* | 12 af | 10 f | 17 af | 13 a | 37 b | 37 f |
| Kenya | | 63 af | 65 cf | 60 af | 65 a | 59 f | 59 f |
| Lesotho | 49 a* | 73 af | 73 f | 73 af | 79 a | 75 b | 76 f |
| Madagascar | | 28 af | 10 cf | 27 af | 35 a | 44 b | 33 f* |
| Malawi | 65 a* | 53 a | 53 f | 71 a | 78 af | 84 f | 80 f |
| Mauritius | | 61 a | | 68 a | 73 a | 82 b | 84 f |
| Mozambique | 32 a* | 39 a | | 46 a* | 44 af | 48 b | 58 f* |
| Namibia | 41 f | | | | | | |
| Rwanda | 42 af | 52 af | 76 f | 78 a | 79 af | 83 f | |
| Sao Tome | 25 a* | 35 af | 58 f | 59 af | 69 a | 45 f | 57 f |
| Seychelles | 29 a* | 90 af | 95 f | 95 af | | | 89 f |
| Somalia | 35 f | 35 a | 28 f | 28 a | 33 a | 54 f | |
| Swaziland | 30 a* | 49 af | 66 f | 74 af | 12 a | 85 bf | |
| Tanzania | 82 f | 76 a | 67 f | 78 af | 83 a | | 83 f |
| Uganda | 22 f | 17 af | 27 f | 48 af | 49 a | | 40 f+ |
| Zambia | 72 f | 55 f | 58 f | 65 af | 80 a | | 76 f |
| Zimbabwe | 56 f | 53 af | 77 f | 77 af | 75 a | | 69 f |

Sources:

- a) Statistics on Children in UNICEF-Assisted Countries (1990-91)
- b) UNICEF Annual Reports 1990
- c) The State of the World's Children (1988-91)
- d) World Development Report (1987-90)
- e) Sub-Saharan Africa: From Crisis to Sustainable Growth
- f) Regional Information System data (from UNICEF country offices)
- g) UNESCO Statistical Yearbook 1990

Symbols:

- * From a year other than the year shown
- (.) Less than half the unit shown
- + Estimate

Pregnant Women Fully Immunized Against Tetanus (TT2) (%)

| | 1980 | 1985 | 1986 | 1987 | 1988 | 1989 | 1990 |
|------------|-------|-------|-------|--------|-------|------|------|
| Angola | | 54 af | 54 cf | 17 f | 19 ac | 23 f | |
| Botswana | 32 f | 17 af | 16 f | 40 acf | 61 ac | 79 b | |
| Burundi | 25 a* | 20 af | 32 f | 59 af | 69 af | | |
| Comoros | | 8 af | 17 f | 26 af | 59 a | 59 b | |
| Ethiopia | | 4 af | 5 f | 7 f | 7 a | | |
| Kenya | | 40 af | 40 f | 62 af | 62 a | | |
| Lesotho | 1 f | 1 f | | | (.) a | 0 b | |
| Madagascar | | 22 af | 5 f | 6 af | 6 a | 12 b | |
| Malawi | | 38 a | 40 f | 41 a | 63 af | 72 f | |
| Mauritius | 20 f | 18 a | 68 f | 68 a | 65 a | 62 b | |
| Mozambique | | 40 a | | 59 ac* | 43 a | 48 b | |
| Namibia | | | | | | | |
| Rwanda | 5 a* | 21 a | | (.) a | 43 a | | |
| Sao Tome | 24 a* | 47 af | 57 f | 59 af | 50 a | 37 f | 61 f |
| Seychelles | | 99 af | 98 f | 98 af | | | |
| Somalia | 5 a* | 29 af | 2 f | 26 af | 37 a | | |
| Swaziland | | | | 45 af | | 64 b | |
| Tanzania | 35 f | 38 a | 60 f | 58 af | 48 a | | |
| Uganda | 20 a* | 20 a | 7 f | 13 af | 14 a | | 30 b |
| Zambia | | 38 f | 41 f | 45 af | 45 a | | |
| Zimbabwe | | 40 af | 45 f | 48 a | 19 a | | |

Sources:

- a) Statistics on Children in UNICEF-Assisted Countries (1990-91)
 b) UNICEF Annual Reports 1990
 c) The State of the World's Children (1988-91)
 d) World Development Report (1987-90)
 e) Sub-Saharan Africa: From Crisis to Sustainable Growth
 f) Regional Information System data (from UNICEF country offices)
 g) UNESCO Statistical Yearbook 1990

Symbols:

- * From a year other than the year shown
 (.) Less than half the unit shown
 + Estimate

ORT Use Rate

| | 1980 | 1985 | 1986 | 1987 | 1988 | 1989 | 1990 |
|------------|------|-------|-------|--------|------|------|------|
| Angola | | 17 cf | 20 f | 12 ac* | | | |
| Botswana | | 38 cf | 19 f | 35 ac* | | | |
| Burundi | | 26 c | 12 f | 30 a* | 36 b | 42 b | |
| Comoros | | 3 f | | 13 a* | | | |
| Ethiopia | | 38 cf | 9 f | 23 a* | | | |
| Kenya | | 10 cf | 21 f | 26 a* | | | |
| Lesotho | | 41 cf | 25 f | 27 a* | | | |
| Madagascar | | | 8 c | 2 a* | | | |
| Malawi | | 9 cf | 39 cf | 10 a* | | | |
| Mauritius | | 12 cf | 18 cf | 4 a* | | | |
| Mozambique | | 10 c | 54 c | 14 a* | | | |
| Namibia | | | | | | | |
| Rwanda | | 24 cf | | 4 a* | | | |
| Sao Tome | | 24 f | 24 f | 46 a* | | | 36 f |
| Seychelles | | | | | | | |
| Somalia | | 27 c | 50 cf | 12 a* | | | |
| Swaziland | | | | | | | |
| Tanzania | | 36 cf | 42 cf | 11 a* | 42 f | | |
| Uganda | | 21 cf | 21 cf | 5 a* | | 15 f | |
| Zambia | | 42 cf | 32 cf | 32 a* | | | |
| Zimbabwe | | 4 cf | 5 cf | 1 a* | 51 f | | |

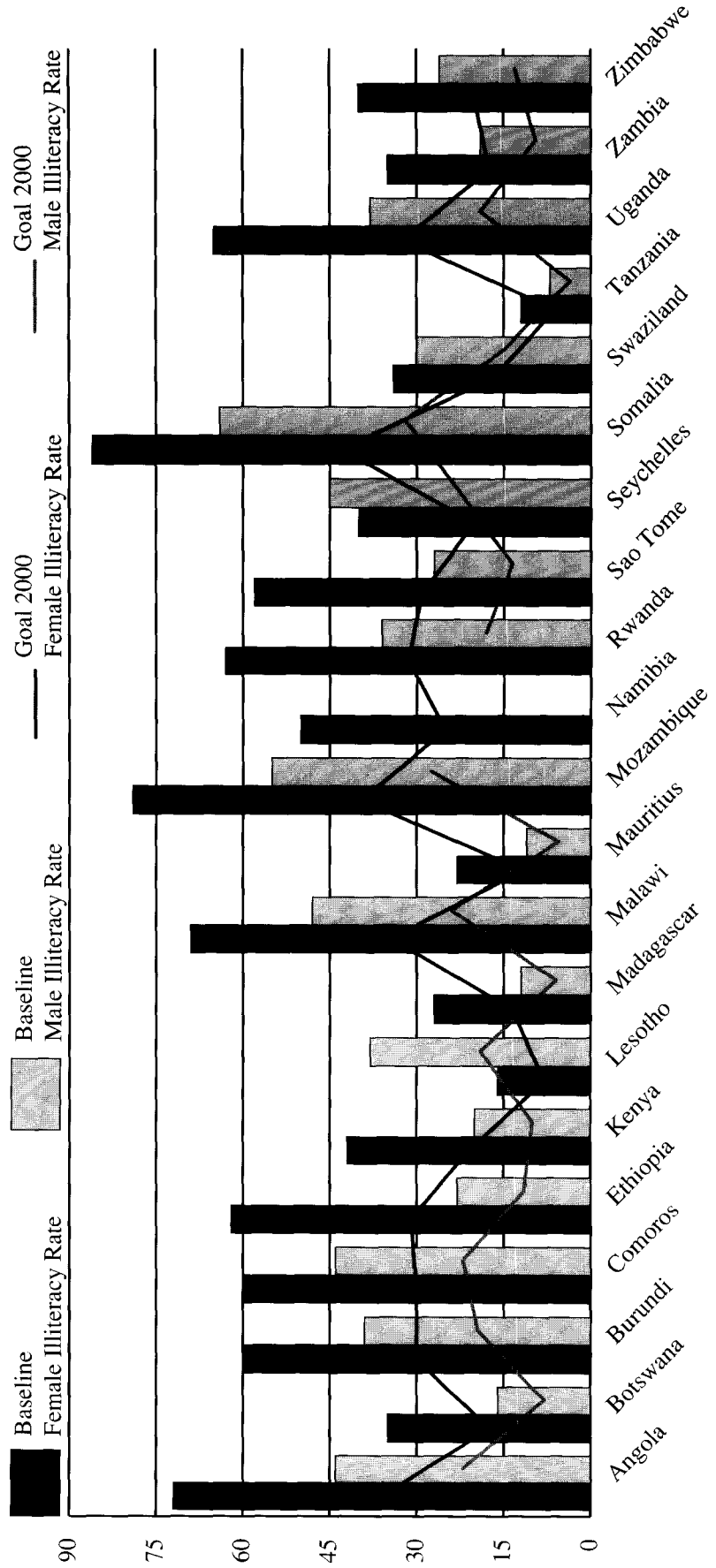
Sources:

- a) Statistics on Children in UNICEF-Assisted Countries (1990-91)
- b) UNICEF Annual Reports 1990
- c) The State of the World's Children (1988-91)
- d) World Development Report (1987-90)
- e) Sub-Saharan Africa: From Crisis to Sustainable Growth
- f) Regional Information System data (from UNICEF country offices)
- g) UNESCO Statistical Yearbook 1990

Symbols:

- * From a year other than the year shown
- (.) Less than half the unit shown
- + Estimate

GOAL 2000: Reduction of Adult Illiteracy by One-Half, with Emphasis on Female Literacy



Adult Literacy Rate (15 years and older) (total/male/female)

| | 1980 | 1985 | 1986 | 1987 | 1988 | 1989 | 1990 |
|------------|-------------|--------------|-------------|----------|------------|----------|-------------|
| Angola | 28 36 19 f | 41 49 33 acf | | | | | 42 56 28 g+ |
| Botswana | 61 61 61 f | 71 73 69 acf | | | | | 74 84 65 g+ |
| Burundi | 23 29 10 f | 35 43 26 f | | | | | 50 61 40 g+ |
| Comoros | 48 56 40 af | 47 47 — f | | | | 53 — — b | |
| Ethiopia | — 11 5 f | 61 77 38 f | 66 — — af | | | 76 — — b | |
| Kenya | 49 61 38 f | 60 70 49 a | | | 54 63 43 b | | 69 80 58 g+ |
| Lesotho | — 58 — f | 73 62 84 a | | | | | |
| Madagascar | — 68 55 f | 68 74 62 af | | | | | 80 88 73 g+ |
| Malawi | 41 52 31 f | 42 52 31 af | | | | | |
| Mauritius | — 15 28 f | 83 89 77 af | | | | | |
| Mozambique | 27 44 12 g+ | 39 55 22 a | | | | | 33 45 21 g+ |
| Namibia | | 35 — 50 f | | | | | |
| Rwanda | 50 — — f | 47 61 33 a | | 45 — — f | | | 50 64 37 g+ |
| Sao Tome | 58 73 42 a* | 60 — — f | | | | | |
| Seychelles | | 88 55 60 f | | | | | |
| Somalia | | 12 18 6 a | 12 18 7 f | | | | 24 36 14 g+ |
| Swaziland | — 30 42 f | 68 70 66 af | 68 70 66 b | | | | |
| Tanzania | — 53 23 f | — 90 80 f | 91 93 88 af | | | | |
| Uganda | 52 65 41 f | 58 70 45 af | | | — — 43 f | | 48 62 35 g+ |
| Zambia | 59 79 58 f | 76 84 67 af | | | | | 73 81 65 g+ |
| Zimbabwe | — 77 61 f | 74 81 67 af | | | | | 67 74 60 g+ |

Sources:

- a) Statistics on Children in UNICEF-Assisted Countries (1990-91)
- b) UNICEF Annual Reports 1990
- c) The State of the World's Children (1988-91)
- d) World Development Report (1987-90)
- e) Sub-Saharan Africa: From Crisis to Sustainable Growth
- f) Regional Information System data (from UNICEF country offices)
- g) UNESCO Statistical Yearbook 1990

Symbols:

- * From a year other than the year shown
- (.) Less than half the unit shown
- + Estimate

Daily Newspapers (number/circulation per 1,000 inhabitants)

| | 1980 | 1985 | 1986 | 1987 | 1988 | 1989 | 1990 |
|------------|---------|------|---------|------|--------|------|------|
| Angola | 5 16 g* | | 4 11 g | | 4 — g | | |
| Botswana | 1 20 g* | | 1 16 g | | 3 — g | | |
| Burundi | 1 — g* | | 2 — g | | 1 4 g | | |
| Comoros | | | | | | | |
| Ethiopia | 5 1 g* | | 3 1 g | | 3 1 g | | |
| Kenya | 3 10 g* | | 4 13 g | | 5 — g | | |
| Lesotho | 3 24 g* | | 4 29 g | | 4 28 g | | |
| Madagascar | 5 — g* | | 7 6 g | | 6 6 g | | |
| Malawi | | | 1 2 g | | 1 3 g | | |
| Mauritius | 8 79 g* | | 7 71 g | | 7 69 g | | |
| Mozambique | 2 4 g* | | 2 6 g | | 2 5 g | | |
| Namibia | | | 3 13 g | | 3 10 g | | |
| Rwanda | | | 1 0.1 g | | | | |
| Sao Tome | | | | | | | |
| Seychelles | 2 64 g* | | 1 53 g | | 1 48 g | | |
| Somalia | 1 — g* | | 2 — g | | 1 — g | | |
| Swaziland | 1 16 g* | | 2 — g | | 3 — g | | |
| Tanzania | 2 10 g* | | 2 4 g | | 2 7 g | | |
| Uganda | 1 2 g* | | 1 2 g | | 6 — g | | |
| Zambia | 2 20 g* | | 2 14 g | | 2 11 g | | |
| Zimbabwe | 2 16 g* | | 3 24 g | | 3 26 g | | |

Sources:

- a) Statistics on Children in UNICEF-Assisted Countries (1990-91)
- b) UNICEF Annual Reports 1990
- c) The State of the World's Children (1988-91)
- d) World Development Report (1987-90)
- e) Sub-Saharan Africa: From Crisis to Sustainable Growth
- f) Regional Information System data (from UNICEF country offices)
- g) UNESCO Statistical Yearbook 1990

Symbols:

- * From a year other than the year shown
- (.) Less than half the unit shown
- + Estimate

Radio /Television Sets (per 1,000 population)

| | 1980 | 1985 | 1986 | 1987 | 1988 | 1989 | 1990 | | | | | | |
|------------|------|------|------|------|------|------|------|-----|---|-----|-----|---|---|
| Angola | 18 | 4 | a | 26 | 5 | c | 49 | 5 | a | 50 | 6 | g | |
| Botswana | | 126 | — | cf | 130 | 7 | a | 134 | 7 | g | 134 | 7 | g |
| Burundi | 37 | — | af | 53 | (.) | c | 56 | — | a | 56 | (.) | g | |
| Comoros | 102 | — | f | 184 | 2 | c | 112 | — | a | 113 | (.) | g | |
| Ethiopia | 78 | 1 | a | 78 | 5 | c | 193 | — | a | 193 | 2 | g | |
| Kenya | 32 | 4 | a | 28 | (.) | c | 68a | 1 | b | 68 | 1 | g | |
| Lesotho | 22 | — | af | 194 | — | f | 193 | 6 | a | 196 | 9 | g | |
| Madagascar | 195 | 5 | a | 70 | — | f | 197 | — | a | 242 | — | g | |
| Malawi | 46 | — | af | 245 | — | cf | 263 | 188 | a | 264 | 188 | g | |
| Mauritius | 210 | 87 | a | 32 | (.) | c | 38 | 1 | a | 39 | 1 | g | |
| Mozambique | | | | 123 | 11 | a | 123 | 11 | a | 125 | 11 | g | |
| Namibia | | | | 54 | — | a | 54 | — | a | 57 | — | g | |
| Rwanda | 29 | — | af | 57 | — | f | 280 | — | a | 274 | — | g | |
| Sao Tome | 259 | — | a | 280 | — | f | 429 | 43 | a | 448 | 48 | g | |
| Seychelles | 323 | — | af | 395 | — | f | 38 | — | a | 40 | (.) | g | |
| Somalia | 28 | — | af | 43 | (.) | c | 147 | 12 | a | 152 | 12 | g | |
| Swaziland | 145 | 2 | a | 154 | — | f | 16 | 1 | a | 20 | 1 | g | |
| Tanzania | 27 | — | a | 89 | — | cf | 96 | 6 | a | 99 | 6 | g | |
| Uganda | 31 | 6 | a | 94 | 6 | a | 73 | 15 | a | 74 | 15 | g | |
| Zambia | 24 | 11 | a | 30 | 14 | c | 28 | 11 | a | 85 | 22 | g | |
| Zimbabwe | 33 | 10 | a | 43 | 14 | c | | | | | | | |

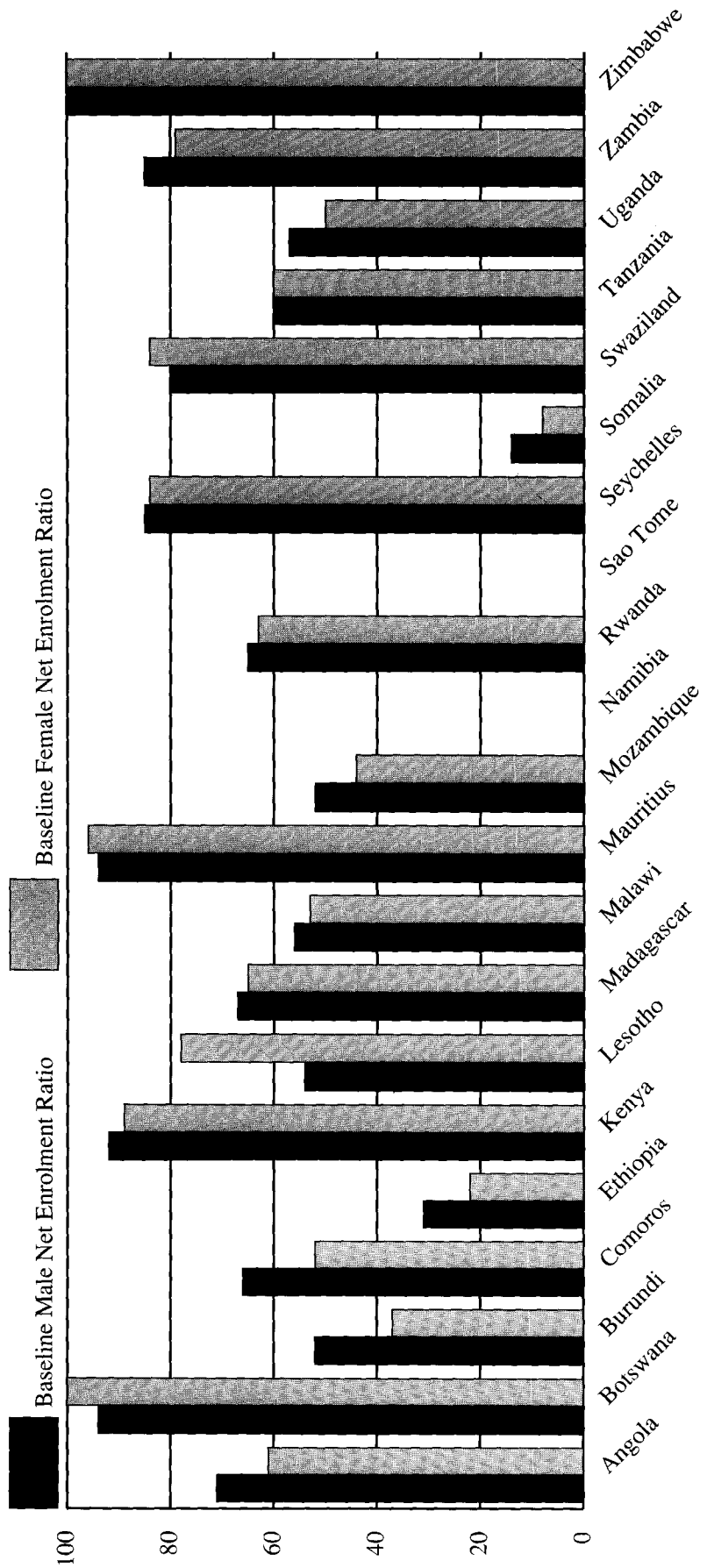
Sources:

- a) Statistics on Children in UNICEF-Assisted Countries (1990-91)
- b) UNICEF Annual Reports 1990
- c) The State of the World's Children (1988-91)
- d) World Development Report (1987-90)
- e) Sub-Saharan Africa: From Crisis to Sustainable Growth
- f) Regional Information System data (from UNICEF country offices)
- g) UNESCO Statistical Yearbook 1990

Symbols:

- * From a year other than the year shown
- (.) Less than half the unit shown
- + Estimate

GOAL 2000: Universal Access to Basic Education



Primary School Enrolment Ratio (gross/net) (total)

| | 1980 | 1985 | 1986 | 1987 | 1988 | 1989 | 1990 |
|------------|-----------|----------|-----------|-----------|----------|---------|------|
| Angola | 158 | a | 93 66 a | 115 97 g | 116 97 g | 117 — g | |
| Botswana | 92 76 g | 108 92 g | 112 95 g | 67 — g | | | |
| Burundi | 29 21 ag | 53 41 g | 59 46 g | 80 — g | | | |
| Comoros | 93 70 f | 87 65 g | 80 59 ag | 37 27 ag | 36 26 g | | |
| Ethiopia | 35 — ag | 34 — g | 36 27 g | 96 — ag | 93 — g | | |
| Kenya | 115 91 g | 98 — g | 97 — g | 112 — g | | | |
| Lesotho | 103 66 g | 113 — g | 112 — g | 97 90 g | 97 66 g | | |
| Madagascar | 143 — g | | | 66 49 ag | 72 55 g | — 10 f | |
| Malawi | 60 43 g | 62 44 g | 65 48 g | 106 94 ag | 105 95 g | | |
| Mauritius | 108 93 ag | 105 97 g | 107 92 g | 68 45 ag | — 52 f | | |
| Mozambique | 99 36 ag | 86 50 g | 84 49 g | | | | |
| Namibia | | | | 67 64 ag | | | |
| Rwanda | 63 59 a | 63 59 g | 65 62 g | | | | |
| Sao Tome | | | | | | | |
| Seychelles | 102 84 a* | | | | | | |
| Somalia | 27 20 g | 15 11 ag | | | | | |
| Swaziland | 103 80 g | 107 83 g | 105 81 g | 105 82 g | 105 82 g | | |
| Tanzania | 93 68 g | 72 54 g | 69 52 g | 66 50 ag | — 64 f | — 60 f | |
| Uganda | 50 — ag | 70 — g | 70 53 g | 74 — g | — 77 g | | |
| Zambia | 90 77 g | 99 — g | 97 82 f | | | | |
| Zimbabwe | 88 — a | 135 — g | 136 100 g | 133 — g | 128 — ag | | |

Sources:

- a) Statistics on Children in UNICEF-Assisted Countries (1990-91)
- b) UNICEF Annual Reports 1990
- c) The State of the World's Children (1988-91)
- d) World Development Report (1987-90)
- e) Sub-Saharan Africa: From Crisis to Sustainable Growth
- f) Regional Information System data (from UNICEF country offices)
- g) UNESCO Statistical Yearbook 1990

Symbols:

- * From a year other than the year shown
- (.) Less than half the unit shown
- + Estimate

Primary School Enrolment Ratio (gross/net) (male)

| | 1980 | 1985 | 1986 | 1987 | 1988 | 1989 | 1990 |
|------------|-----------|-----------|-----------|-----------|----------|---------|--------|
| Angola | 158 74 g* | 93 — g* | — 71 ac | 112 94 g | 114 94 g | 114 — g | |
| Botswana | 84 70 g | 103 87 g | 108 91 g | | | | |
| Burundi | 35 26 ag | 61 47 g | 68 52 g | | | | |
| Comoros | 109a 56 f | 100 — g | 90 66 ag | | | | |
| Ethiopia | 45 — g | 40 — g | 44 31 g | 89 — g | 44 31 g | 75 — b | 80 — b |
| Kenya | 120 92 g | 101 — g | 100 — g | 46 32 ag | 95 — g | 40 — b | |
| Lesotho | 85 54 ag | 101 — g | 100 — g | 98 — ag | | | |
| Madagascar | 146 — g | 125 — c* | 100 92 g | 101 — g | 99 67 g | | |
| Malawi | 72 48 g | 70 47 g | 73 50 g | 100 92 g | 79 56 g | | |
| Mauritius | 108 92 g | 105 96 g | 106 91 g | 73 50 ag | 104 94 g | | |
| Mozambique | 115 39 g | 97 55 g | 94 53 g | 105 93 ag | | | |
| Namibia | | | | 76 49 ag | — 52 f | | |
| Rwanda | 66 61 g | 64 60 g | 67 63 g | 69 65 ag | | | |
| Sao Tome | | | | | | | |
| Seychelles | 103 85 a* | | | | | | |
| Somalia | 35 25 g | 20 14 ag | | | | | |
| Swaziland | 104 — g | 108 81 g | 106 80 g | 106 80 g | 105 80 g | | |
| Tanzania | 100 — ag | 73 53 g | 70 51 g | 67 50 ag | — 64 f | 82 60 b | |
| Uganda | 56 — ag | 66 43 c* | 76 57 g | | | | |
| Zambia | 98 81 g | 106 — g | 102a 85 f | | | | |
| Zimbabwe | 140 — g | 139 100 g | 130 — ag | | | | |

Sources:

- a) Statistics on Children in UNICEF-Assisted Countries (1990-91)
- b) UNICEF Annual Reports 1990
- c) The State of the World's Children (1988-91)
- d) World Development Report (1987-90)
- e) Sub-Saharan Africa: From Crisis to Sustainable Growth
- f) Regional Information System data (from UNICEF country offices)
- g) UNESCO Statistical Yearbook 1990

Symbols: * From a year other than the year shown
(.) Less than half the unit shown
+ Estimate

Primary School Enrolment Ratio (gross/net) (female)

| | 1980 | 1985 | 1986 | 1987 | 1988 | 1989 | 1990 |
|------------|-----------|----------|-----------|-----------|-----------|---------|--------|
| Angola | 137 67 g* | | — 61 ac | | | | |
| Botswana | 100 83 g | 112 96 g | 115 98 g | 118 100 g | 119 100 g | 120 — g | |
| Burundi | 22 17 ag | 44 35 g | 50 41 g | — 37 f | | | |
| Comoros | 78a 44 f | | 70 52 a | | | | |
| Ethiopia | 25 — ag | 27 — g | 28 22 g | 28 22 ag | 28 22 g | 27 — b | 65 — b |
| Kenya | 110 89 g | 96 — g | 94 — g | 93 — ag | 91 — g | | |
| Lesotho | 120 78 ag | 125 — g | 123 — g | 123 — g | | | |
| Madagascar | 139 — g | 118 — c* | | 95 88 g | 95 65 g | — 10 f | |
| Malawi | 48 38 g | 53 42 g | 57 46 g | 59 47 ag | 65 53 g | | |
| Mauritius | 108 93 ag | 106 98 g | 107 93 g | 107 95 ag | 105 96 g | | |
| Mozambique | 84 34 g | 75 46 g | 74 45 g | 59 41 ag | — 44 f | | |
| Namibia | | | | | | | |
| Rwanda | 60 57 ag | 61 58 g | 64 61 g | 66 63 ag | | | |
| Sao Tome | | | | | | | |
| Seychelles | 102 84 a* | | | | | | |
| Somalia | 19 15 g | 10 8 ag | | | | | |
| Swaziland | 102 — g | 105 85 g | 104 83 g | 104 84 g | 104 84 g | | |
| Tanzania | 86 — ag | 71 54 g | 69 53 g | 66 51 ag | — 64 f | 78 60 b | |
| Uganda | 43 — ag | 50 38 c* | 63 50 g | | | | |
| Zambia | 82 73 g | 93 — g | 92a 79 f | | | | |
| Zimbabwe | | 131 — g | 132 100 g | | 126 — ag | | |

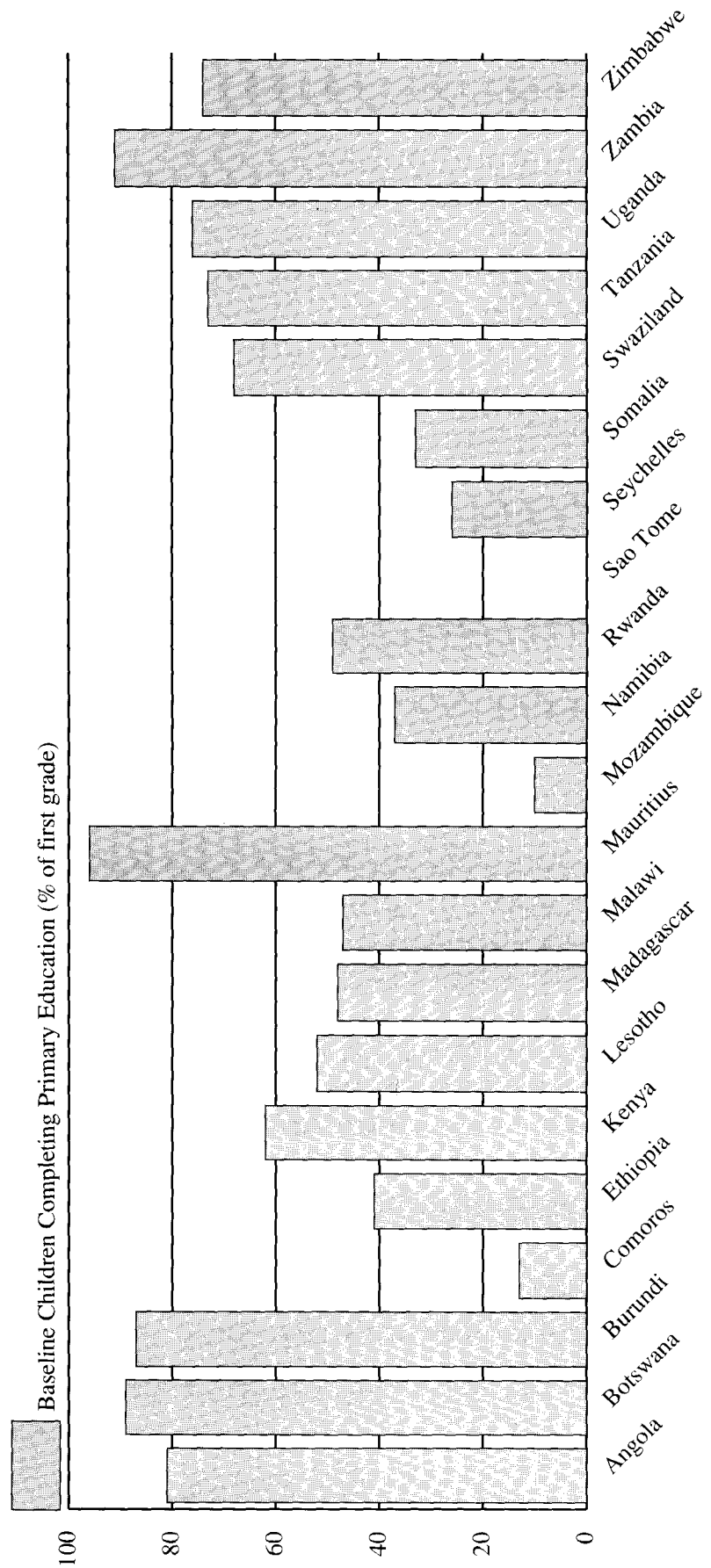
Sources:

- a) Statistics on Children in UNICEF-Assisted Countries (1990-91)
- b) UNICEF Annual Reports 1990
- c) The State of the World's Children (1988-91)
- d) World Development Report (1987-90)
- e) Sub-Saharan Africa: From Crisis to Sustainable Growth
- f) Regional Information System data (from UNICEF country offices)
- g) UNESCO Statistical Yearbook 1990

Symbols:

- * From a year other than the year shown
- (.) Less than half the unit shown
- + Estimate

GOAL 2000: Completion of Primary Education by at Least 80% of Primary School Age Children



Children Completing Primary Level (% of first grade)

| | 1980 | 1985 | 1986 | 1987 | 1988 | 1989 | 1990 |
|------------|-------|-------|-------|-------|------|------|------|
| Angola | 24 a | 24 cf | 24 f | | 81 f | | |
| Botswana | 80 f | 80 f | 80 f | 89 ac | 89 f | | |
| Burundi | 94 f | 94 f | 87 a | | 87 f | | |
| Comoros | 65 f | 41 cf | 41 f | | | 20 b | 13 b |
| Ethiopia | 49 f | 41 c* | 41 c* | | | | |
| Kenya | 55 ab | 62 f | 62 af | | | | |
| Lesotho | 27 a* | 27 f | 52 a | | | | |
| Madagascar | 30 f | 30 f | 30 f | 25 f | 48 a | | |
| Malawi | 28 af | 25 f | 33 a | 41 f | 47 f | | |
| Mauritius | | | 96 f | | | | |
| Mozambique | 26 a | 26 c* | 39 c* | | 10 f | | |
| Namibia | 30 f | | | 37 f | | | |
| Rwanda | 47 af | 47 f | 47 f | 49 a | | | |
| Sao Tome | | | | | | | |
| Seychelles | 89 a | 26 f | 26 f | | | | |
| Somalia | 33 f | 33 af | 33 f | | | | |
| Swaziland | 68 af | 61 a | 61 a | 68 a | | | |
| Tanzania | 76 f | 76 f | 76 f | 76 af | 73 f | | |
| Uganda | 59 f | | 76 a | | | | |
| Zambia | 85 af | 85 f | 91 a | | | | |
| Zimbabwe | | 79 f | 74 a | | | | |

Sources:

- a) Statistics on Children in UNICEF-Assisted Countries (1990-91)
- b) UNICEF Annual Reports 1990
- c) The State of the World's Children (1988-91)
- d) World Development Report (1987-90)
- e) Sub-Saharan Africa: From Crisis to Sustainable Growth
- f) Regional Information System data (from UNICEF country offices)
- g) UNESCO Statistical Yearbook 1990

Symbols:

- * From a year other than the year shown
- (.) Less than half the unit shown
- + Estimate

Pupil/Teacher Ratio at Primary Level

| | 1980 | 1985 | 1986 | 1987 | 1988 | 1989 | 1990 |
|------------|-------|-------|-------|-------|-------|------|------|
| Angola | 40 g* | | | | | | |
| Botswana | 32 f | 32 f | 32 f | 32 f | 32 f | | |
| Burundi | 35 f | 56 fg | 62 fg | | | | |
| Comoros | 46 fg | 35 fg | 35 fg | 36 g | | | |
| Ethiopia | 64 g | 48 g | 48 fg | 49 g | 43 g | | |
| Kenya | 38 g | 34 g | 34 g | 34 g | 33 g | | |
| Lesotho | 48 fg | 55 g | 55 g | 56 g | | | |
| Madagascar | 44 fg | 38 f | | 40 g | 40 g | | |
| Malawi | 65 fg | 61 fg | 63 g | | 64 f | | |
| Mauritius | 20 g | 22 g | 23 g | 22 g | 22 g | | |
| Mozambique | 81 g | 63 g | 63 g | | 60 f | | |
| Namibia | | | | | | | |
| Rwanda | 59 fg | 56 fg | 57 fg | 57 g | | | |
| Sao Tome | 28 fg | 31 f | 30 g | 29 g | | | |
| Seychelles | 22 fg | 22 f | 22 fg | 21 g | 21 fg | 19 g | |
| Somalia | 33 fg | 19 g | | | | | |
| Swaziland | 34 fg | 34 fg | 33 fg | 33 g | 33 g | | |
| Tanzania | 41 fg | 34 fg | 33 fg | 33 fg | 33 f | 33 f | |
| Uganda | 34 fg | 34 g | 33 f | 33 fg | 35 fg | 33 f | |
| Zambia | 49 fg | 49 fg | 47 g | | | | |
| Zimbabwe | 44 g | 40 g | 39 g | 39 f | 38 g | | |

Sources:

- a) Statistics on Children in UNICEF-Assisted Countries (1990-91)
- b) UNICEF Annual Reports 1990
- c) The State of the World's Children (1988-91)
- d) World Development Report (1987-90)
- e) Sub-Saharan Africa: From Crisis to Sustainable Growth
- f) Regional Information System data (from UNICEF country offices)
- g) UNESCO Statistical Yearbook 1990

Symbols:

- * From a year other than the year shown
- (.) Less than half the unit shown
- + Estimate

Secondary School Enrolment Ratio (gross/net) (total)

| | 1980 | 1985 | 1986 | 1987 | 1988 | 1989 | 1990 |
|------------|----------|----------|---------|---------|----------|--------|--------|
| Angola | 19 — ag | 13 — g* | | 33 26 g | 33g 26 f | 34 — g | |
| Botswana | 21 16 g | 30 23 g | 32 25 g | | | | |
| Burundi | 3 — ag | 4 3 g | 4 3 g | | | | |
| Comoros | 23 — g | 31 — g | 30 — ag | 50 — b | | 23 — b | 13 — b |
| Ethiopia | 9 — ag | 13 — g | 14 — g | 15 — ag | 15 — g | | |
| Kenya | 20 — g | 21 — g | 21 — g | 23 — ag | 23 — g | | |
| Lesotho | 18 13 g | 22 13 a* | 24 — g | 25 — g | | | |
| Madagascar | | | — 36 f | 21 — ag | 19 — g | | |
| Malawi | 3 — g | 4 — g | 4g 4 f | 4 2 b | 4 — g | — 2 f | |
| Mauritius | 48 — ag | 51 — g | 50 — g | 51 41 a | 53g 48 f | | |
| Mozambique | 5 — ag | 7 — g | 7 — g | 5 — ag | | | |
| Namibia | | | | | | | |
| Rwanda | 3 2 g | 6 2 g | 6 2 g | 6 2 ag | | | |
| Sao Tome | | | | | | | |
| Seychelles | 37 26 a* | | | | | | |
| Somalia | 10 6 g | 10 4 g | | | | | |
| Swaziland | 38 — g | 42 — g | 42 — g | 43 32 a | 44 — g | | |
| Tanzania | 3 — ag | 3 — g | 3 — g | 4 — ag | | | |
| Uganda | 5 — ag | 10g 8 f | 12 — g | 13 — g | 13 — g | | |
| Zambia | 16 — g | 17 — g | | | | | |
| Zimbabwe | 8 — ag | 41 — g | 45 — g | | 51 — g | | |

Sources:

- a) Statistics on Children in UNICEF-Assisted Countries (1990-91)
- b) UNICEF Annual Reports 1990
- c) The State of the World's Children (1988-91)
- d) World Development Report (1987-90)
- e) Sub-Saharan Africa: From Crisis to Sustainable Growth
- f) Regional Information System data (from UNICEF country offices)
- g) UNESCO Statistical Yearbook 1990

Symbols:

- * From a year other than the year shown
- (.) Less than half the unit shown
- + Estimate

Secondary School Enrolment Ratio (gross/net) (male)

| | 1980 | 1985 | 1986 | 1987 | 1988 | 1989 | 1990 |
|------------|------|------|------|------|------|------|------|
| Angola | 18 | 13 | g* | | | | |
| Botswana | 20 | 14 | g | 32 | 24 | g | |
| Burundi | 4 | — | g | — | 6 | f | 33 |
| Comoros | 31 | — | ag | — | — | — | — |
| Ethiopia | 11 | — | ag | 18 | — | ag | 17 |
| Kenya | 23 | — | g | 27 | — | g | 27 |
| Lesotho | 14 | 9 | ag | 20 | — | g | 20 |
| Madagascar | | | | 23 | — | ag | 20 |
| Malawi | 5 | — | ag | 5 | 2 | b | — |
| Mauritius | 49 | — | ag | 53 | 43 | a | 53g |
| Mozambique | 8 | — | ag | 7 | — | ag | 48 |
| Namibia | | | | | | | |
| Rwanda | 4 | 2 | g | 7 | 3 | g | — |
| Sao Tome | | | | | | | |
| Seychelles | 37 | 28 | a* | | | | |
| Somalia | 15 | 8 | g | | | | |
| Swaziland | 39 | — | g | 44 | 30 | a | 45 |
| Tanzania | 4 | — | ag | 5 | — | ag | — |
| Uganda | 7 | — | ag | — | — | — | — |
| Zambia | 22 | — | ag | | | | |
| Zimbabwe | | | | | | | |

Sources:

- a) Statistics on Children in UNICEF-Assisted Countries (1990-91)
 b) UNICEF Annual Reports 1990
 c) The State of the World's Children (1988-91)
 d) World Development Report (1987-90)
 e) Sub-Saharan Africa: From Crisis to Sustainable Growth
 f) Regional Information System data (from UNICEF country offices)
 g) UNESCO Statistical Yearbook 1990

Symbols:

- * From a year other than the year shown
 (.) Less than half the unit shown
 + Estimate

Secondary School Enrolment Ratio (gross/net) (female)

| | 1980 | 1985 | 1986 | 1987 | 1988 | 1989 | 1990 |
|------------|------|------|------|------|------|------|------|
| Angola | 9 | 7 | g* | | | | |
| Botswana | 22 | 18 | g | 33 | 27 | g | 36 |
| Burundi | 2 | — | ag | 3 | 3 | f | — |
| Comoros | 16 | — | ag | 24 | — | — | 19 |
| Ethiopia | 6 | — | ag | 11 | — | ag | — |
| Kenya | 16 | — | g | 17 | — | ag | 12 |
| Lesotho | 20 | 16 | a | 26 | 17 | g | 19 |
| Madagascar | | | a* | 30 | — | ag | — |
| Malawi | 2 | — | c* | — | 30 | g | — |
| Mauritius | 47 | — | g | 2 | — | ag | — |
| Mozambique | 3 | — | g | 49 | — | g | — |
| Namibia | | | g | 4 | — | ag | — |
| Rwanda | 3 | 1 | g | 5 | 2 | ag | — |
| Sao Tome | | | g | 5 | 2 | ag | — |
| Seychelles | 37 | 25 | a* | | | | |
| Somalia | 5 | 3 | g | 7 | 3 | g | |
| Swaziland | 37 | — | g | 42 | — | g | 43 |
| Tanzania | 2 | — | ag | 2 | — | a | — |
| Uganda | 3 | — | ag | — | 5 | ag | — |
| Zambia | 11 | — | g | 13 | — | f | — |
| Zimbabwe | | | g | 33 | — | g | 42 |

Sources: a) Statistics on Children in UNICEF-Assisted Countries (1990-91)
 b) UNICEF Annual Reports 1990
 c) The State of the World's Children (1988-91)
 d) World Development Report (1987-90)
 e) Sub-Saharan Africa: From Crisis to Sustainable Growth
 f) Regional Information System data (from UNICEF country offices)
 g) UNESCO Statistical Yearbook 1990

Symbols: * From a year other than the year shown
 (.) Less than half the unit shown
 + Estimate

Tertiary School Enrolment Ratio (total/male/female)

| | 1980 | 1985 | 1986 | 1987 | 1988 | 1989 | 1990 |
|------------|---------------|---------------|---------------|---------------|---------------|------|------|
| Angola | 0.3 — — g | 0.6 — — g | 1.0 — — e | | | | |
| Botswana | 1.4 2.2 0.8 g | 2.2 — — g | 2.6 — — g | | | | |
| Burundi | 0.6 0.9 0.3 g | 0.7 1.1 0.3 g | 0.7 1.0 0.4 g | 2.8 3.6 2.1 g | | | |
| Comoros | | | | 0.8 1.2 0.4 g | | | |
| Ethiopia | 0.4 — — g | 0.9 1.5 0.3 g | 1.0 1.7 0.3 g | 0.9 1.6 0.3 g | 0.9 1.6 0.3 g | | |
| Kenya | 0.9 1.5 0.4 g | 1.3 1.9 0.7 g | | 1.5 2.1 0.8 g | | | |
| Lesotho | 1.7 — — g | | | 3.0 2.6 3.4 g | 3.0 2.3 5.5 g | | |
| Madagascar | 3.0 — — g | 4.2 5.3 3.2 g | 3.8 4.5 3.0 g | 3.8 — — g | 3.7 4.3 3.2 g | | |
| Malawi | 0.7 1.0 0.4 g | 0.6 0.9 0.4 g | 0.6 0.9 0.3 g | | | | |
| Mauritius | 1.0 1.4 0.7 g | 0.9 1.2 0.7 g | 0.9 1.2 0.6 g | 1.3 1.6 0.9 g | 1.8 2.3 1.2 g | | |
| Mozambique | 0.1 0.1 0.1 g | 0.1 0.2 0.1 g | | 0.2 0.3 0.1 g | | | |
| Namibia | | | | | | | |
| Rwanda | 0.3 0.5 0.1 g | 0.4 0.7 0.1 g | 0.4 0.6 0.1 g | 0.4 0.7 0.1 g | | | |
| Sao Tome | | | | | | | |
| Seychelles | | | | | | | |
| Somalia | 3.9 4.7 3.1 g | 2.9 5.0 1.1 g | 4.0 — — e | | | | |
| Swaziland | | 3.7 — — g | 3.7 4.4 3.1 g | 3.7 4.4 3.1 g | | | |
| Tanzania | | 0.3 0.4 0.1 g | 0.2 0.4 0.1 g | 0.3 0.5 0.1 g | | | |
| Uganda | 0.5 0.8 0.2 g | 0.8 1.2 0.4 g | 0.8 1.2 0.4 g | 0.9 1.3 0.5 g | | | |
| Zambia | 1.6 — — g | 1.4 2.3 0.6 g | 2.3 3.7 0.9 g | 2.0 3.2 0.8 g | | | |
| Zimbabwe | 1.3 — — g | 3.2 — — g | 3.7 4.7 2.8 g | 4.2 — — g | 4.0 — — g | | |

Sources:

- a) Statistics on Children in UNICEF-Assisted Countries (1990-91)
b) UNICEF Annual Reports 1990
c) The State of the World's Children (1988-91)
d) World Development Report (1987-90)
e) Sub-Saharan Africa: From Crisis to Sustainable Growth
f) Regional Information System data (from UNICEF country offices)
g) UNESCO Statistical Yearbook 1990

Symbols: * From a year other than the year shown
(.) Less than half the unit shown
+ Estimate

Total Population (thousands)

| | 1980 | 1985 | 1986 | 1987 | 1988 | 1989 | 1990 |
|------------|----------|----------|----------|----------|----------|----------|---------|
| Angola | 7722 f | 8753 f | 8989 f | 9232 f | 9483 f | | |
| Botswana | 919 f | 1086 f | 1126 f | 1200 f | 1211 f | 1255 f | |
| Burundi | 4100 af | 4721 af | 4774 f | 5000 c | 5147 af | | |
| Comoros | 381 a | 444 a | 399 b | 412 b | 487 a | 439 b | 453 b |
| Ethiopia | 37787 f | 43382 f | 44597 f | | 45000 a* | 50800 b | |
| Kenya | 16798 f | 20241 f | 21091 f | 22100 cf | 23000 a* | 23500 b* | |
| Lesotho | 1342 f | 1504 f | 1543 f | 1600 cf | 1676 a | | |
| Madagascar | 8595 f | 9982 f | 10271 f | 10894 f | 11259 f | | |
| Malawi | 6027 f | 7021 f | 7254 f | 7983 f | 8248 f | 8521 f | 8470 b |
| Mauritius | 967 f | 1023 f | 1040 f | 1056 f | 1077 f | 1085 f | |
| Mozambique | 12000 a* | 14000 a* | 14300 c* | 14500 c* | 14932 f | | 1600 f+ |
| Namibia | 1306 a | 1518 a | | | | | |
| Rwanda | 5139 f | 6133 f | 6300 c* | 6500 c* | 6800 a* | | |
| Sao Tome | 94 f | 108 f | 111 f | 112 f | 116 f | | |
| Seychelles | 63 af | 65 af | 66 f | 66 f | 67 af | | |
| Somalia | 5133 f | 5980 f | 6106 f | 6900 cf | 7100 a* | | 9400 b* |
| Swaziland | 634 f | 743 f | 776 f | | | | |
| Tanzania | 18869 f | 22499 f | 24000 f* | 24500 c* | 25000 a* | | |
| Uganda | 13202 f* | 15680 f* | 16227 f* | 16600 c* | 17000 a* | 18100 c* | |
| Zambia | 5642 f | 6605 f | 6889 f | 7600 f | 7900 a* | | |
| Zimbabwe | 7074 f | 8121 f | 8413 f | 8800 f | 9100 a* | | |

Sources:

- a) Statistics on Children in UNICEF-Assisted Countries (1990-91)
- b) UNICEF Annual Reports 1990
- c) The State of the World's Children (1988-91)
- d) World Development Report (1987-90)
- e) Sub-Saharan Africa: From Crisis to Sustainable Growth
- f) Regional Information System data (from UNICEF country offices)
- g) UNESCO Statistical Yearbook 1990

Symbols:

- * From a year other than the year shown
- (.) Less than half the unit shown
- + Estimate

Population Under 15/Under 5 (thousands)

| | 1980 | 1985 | 1986 | 1987 | 1988 | 1989 | 1990 |
|------------|---------------|--------------|--------------|--------------|---------------|--------------|--------------|
| Angola | 3600 1400 a* | 4013 1282 f | 4119 1316 f | 4127 — f | 4500 1700 ac* | | |
| Botswana | 448 167 a | 546 219 a | 600 200 c* | 600 200 c* | 607 242 a | | |
| Burundi | 1876 570 af | 2212 675 af | 2005 664 f | | 2364 733 af | | |
| Comoros | 182 55 af | 188 59 f | 195 61 f | 210 75 b | 236 70 a | 217 80 b | 221 86 b |
| Ethiopia | 18000 7000 a* | 19749 6330 f | 20302 6507 f | | 21000 7600 a* | 24500 9400 b | |
| Kenya | | 10462 3417 f | 10901 3560 f | 11073 4419 f | — 4500 b* | — 4800 b* | |
| Lesotho | 590 224 a | 622 194 f | 637 199 f | 734 — f | 755 289 a | | |
| Madagascar | 4000 — f | 4353 1384 f | 4478 1424 f | 4760 1510 f | 4919 1560 f | | |
| Malawi | 3000 1100 a* | 3300 1000 f* | 3400 1100 f* | 3700 1100 f* | 3800 1100 f* | 3900 1600 f* | 4000 1600 b* |
| Mauritius | 323 92 f | 328 94 f | 304 74 f | 306 72 f | 307 92 b | 308 94 b | |
| Mozambique | 5500 2100 a* | 6300 2400 a* | | | 6589 2578 f | | |
| Namibia | 608 239 a | 717 278 a | | | | | 764 294 f+ |
| Rwanda | 2872 905 f | 2968 935 f | | | | | |
| Sao Tome | 42 13 f | 42 13 f | — 16 f | — 16 f | | | |
| Seychelles | 25 — f | 26 7 f | 24 — f | | 25 8 f | | |
| Somalia | 2600 824 f | 2654 841 f | 3300 — f | 3300 1400 c* | 3500 1400 a* | | |
| Swaziland | 272 107 a | 330 102 f | 304 105 f | | 364 143 a | | |
| Tanzania | 9600 3800 a* | 9961 3198 f | 10910 3522 f | | 12000 5200 a* | | |
| Uganda | 6600 2800 a* | 7800 3086 c* | | 8400 3300 c* | 8700 3400 a* | 9400 3800 c* | |
| Zambia | 2800 — f | | 3229 1027 f | 3900 — f | 4000 1600 a* | | |
| Zimbabwe | 3600 1300 a* | 3831 1220 f | 3969 1264 f | 4300 — f | 4400 1600 a* | | |

Sources:

- a) Statistics on Children in UNICEF-Assisted Countries (1990-91)
b) UNICEF Annual Reports 1990
c) The State of the World's Children (1988-91)
d) World Development Report (1987-90)
e) Sub-Saharan Africa: From Crisis to Sustainable Growth
f) Regional Information System data (from UNICEF country offices)
g) UNESCO Statistical Yearbook 1990

Symbols:

- * From a year other than the year shown
() Less than half the unit shown
+ Estimate

Population Under 1 (thousands)

| | 1980 | 1985 | 1986 | 1987 | 1988 | 1989 | 1990 |
|------------|------|--------|--------|-------|-------|-------|------|
| Angola | | 352 f | 361 f | 387 f | | | |
| Botswana | | 165 f | 171 f | | 51 f | | |
| Burundi | | 183 f | 183 f | | | 52 f | |
| Comoros | | 16 f | 17 f | | | | |
| Ethiopia | | 1862 f | 1914 f | | | | |
| Kenya | | 979 f | 1020 f | | | | |
| Lesotho | | 54 f | 55 f | | | | |
| Madagascar | | 393 f | 404 f | 428 f | 442 f | | |
| Malawi | | 290 f | 300 f | 310 f | 320 f | 330 f | |
| Mauritius | | 24 f | 24 f | 18 f | 19 f | | |
| Mozambique | | | | | 553 f | | |
| Namibia | | | | | | | |
| Rwanda | | 260 f | 269 f | | | | |
| Sao Tome | | 4 f | 4 f | | | | |
| Seychelles | | 2 f | | 3.9 f | 4.2 f | | |
| Somalia | | 233 f | 238 f | | | | |
| Swaziland | | 29 f | 30 f | | | | |
| Tanzania | | 921 f | 1014 f | | | | |
| Uganda | | 649 f | 672 f | | | | |
| Zambia | | 281 f | 293 f | | | | |
| Zimbabwe | | 345 f | 357 f | | | | |

Sources:

- a) Statistics on Children in UNICEF-Assisted Countries (1990-91)
- b) UNICEF Annual Reports 1990
- c) The State of the World's Children (1988-91)
- d) World Development Report (1987-90)
- e) Sub-Saharan Africa: From Crisis to Sustainable Growth
- f) Regional Information System data (from UNICEF country offices)
- g) UNESCO Statistical Yearbook 1990

Symbols:

- * From a year other than the year shown
- (.) Less than half the unit shown
- + Estimate

Crude Death Rate (deaths per 1,000 population)

| | 1980 | 1985 | 1986 | 1987 | 1988 | 1989 | 1990 |
|------------|-------|-------|-------|-------|--------|-------|------|
| Angola | 23 af | 21 af | 21 cf | 20 cf | 20 acf | 20 c | |
| Botswana | 15 a | 13 a | 12 cf | 12 cf | 11 acf | 11 c | |
| Burundi | 20 af | 18 af | 18 cf | 17 cf | 17 af | 18 c | |
| Comoros | 17 af | 15 a | 15 f | 15 f | 14 a | 12 b | 12 b |
| Ethiopia | 23 af | 24 a | 23 cf | 24 cf | 24 a | 20 c | |
| Kenya | 15 af | 13 af | 13 cf | 12 cf | 12 a | 11 c | |
| Lesotho | 15 a | 13 a | 15 c | 13 cf | 12 a | 12 c | |
| Madagascar | 16 a | 15 a | 15 cf | 14 cf | 14 a | 14 c | |
| Malawi | 22 af | 21 af | 20 cf | 20 cf | 20 af | 20 cf | 19 b |
| Mauritius | 6 af | 6 af | 6 cf | 5 cf | 5 a | 7 cf | |
| Mozambique | 20 a | 19 a | 19 c | 19 c | 18 a | 18 c | |
| Namibia | 15 a | 13 a | | | 10 a | 12 c | |
| Rwanda | 20 a | 18 af | 18 cf | 17 cf | 17 a | 17 c | |
| Sao Tome | 10 af | 10 f | 12 f | 9 f | 12 f | | |
| Seychelles | 7 af | 7 f | 8 f | 8 f | 8 af | | |
| Somalia | 22 a | 21 a | 23 cf | 20 c | 20 a | 20 c | |
| Swaziland | 15 a | 13 a | 16 f | 13 f | 12 a | | |
| Tanzania | 16 af | 15 af | 14 cf | 14 cf | 14 a | 14 c | |
| Uganda | 17 af | 16 af | 16 cf | 16 c | 15 a | 15 bc | |
| Zambia | 16 af | 14 af | 14 cf | 14 cf | 14 a | 13 c | |
| Zimbabwe | 12 a | 11 a | 11 cf | 10 cf | 10 a | 10 c | |

Sources:

- a) Statistics on Children in UNICEF-Assisted Countries (1990-91)
b) UNICEF Annual Reports 1990
c) The State of the World's Children (1988-91)
d) World Development Report (1987-90)
e) Sub-Saharan Africa: From Crisis to Sustainable Growth
f) Regional Information System data (from UNICEF country offices)
g) UNESCO Statistical Yearbook 1990

Symbols:

- * From a year other than the year shown
(.) Less than half the unit shown
+ Estimate

Crude Birth Rate (births per 1,000 population)

| | 1980 | 1985 | 1986 | 1987 | 1988 | 1989 | 1990 |
|------------|-------|-------|-------|-------|--------|--------|------|
| Angola | 17 af | 47 af | 47 cf | 47 cf | 47 cf | 47 acf | |
| Botswana | 50 a | 48 a | 49 c | 48 c | 47 acf | 48 c | |
| Burundi | 48 af | 46 af | 46 cf | 46 cf | 46 af | 48 c | |
| Comoros | 47 af | 46 af | 46 f | 46 b | 46 a | 44 b | 44 b |
| Ethiopia | 46 a | 43 a | 44 f | 44 c | 44 a | 50 c | |
| Kenya | 54 a | 54 a | 54 c | 54 c | 54 a | 46 c | |
| Lesotho | 42 af | 41 a | 41 cf | 41 cf | 41 a | 41 c | |
| Madagascar | 46 a | 46 a | 44 c | 46 c | 46 a | 46 c | |
| Malawi | 53 af | 53 af | 53 cf | 53 cf | 53 af | 56 c | |
| Mauritius | 25 af | 21 a | 23 cf | 19 cf | 18 a | 18 c | |
| Mozambique | 46 a | 45 a | 45 c | 45 c | 45 a | 45 c | |
| Namibia | 45 a | 44 a | | | 44 a | 44 c | |
| Rwanda | 53 a | 52 a | 51 cf | 51 cf | 51 a | 51 c | |
| Sao Tome | 41 af | 36 f | 37 f | 35 f | 37 f | | |
| Seychelles | 29 af | 27 f | 26 f | 25 f | 25 a | | |
| Somalia | 53 a | 52 a | 48 cf | 51 cf | 51 a | 49 c | |
| Swaziland | 47 af | 47 af | 47 f | 47 f | 47 a | | |
| Tanzania | 51 af | 51 a | 50 cf | 51 cf | 51 a | 51 c | |
| Uganda | 50 af | 50 af | 50 cf | 50 cf | 50 a | 52 c | |
| Zambia | 51 a | 51 a | 48 cf | 51 cf | 51 a | 51 c | |
| Zimbabwe | 43 a | 42 a | 47 cf | 42 cf | 42 a | 41 c | |

Sources:

- a) Statistics on Children in UNICEF-Assisted Countries (1990-91)
- b) UNICEF Annual Reports 1990
- c) The State of the World's Children (1988-91)
- d) World Development Report (1987-90)
- e) Sub-Saharan Africa: From Crisis to Sustainable Growth
- f) Regional Information System data (from UNICEF country offices)
- g) UNESCO Statistical Yearbook 1990

Symbols:

- * From a year other than the year shown
- (.) Less than half the unit shown
- + Estimate

Life Expectancy at Birth (total/male/female)

| | 1980 | 1985 | 1986 | 1987 | 1988 | 1989 | 1990 |
|------------|-------------|-------------|-------------|-------------|-------------|-------------|-------------|
| Angola | 41 40 43 a | 43 42 45 a | 44 43 45 f | 44 43 46 f | 45 43 46 a | 45 44 47 a | 45 44 47 a |
| Botswana | 55 52 58 a | 57 54 60 a | 58 55 61 f | 59 55 62 f | 59 56 62 a | 59 56 62 af | 59 56 62 af |
| Burundi | 46 44 47 af | 48 46 49 af | 48 46 49 f | 49 47 50 f | 49 48 51 f | 48 47 50 a | 48 47 50 a |
| Comoros | 49 47 51 af | 51 49 53 a | 52 50 53 f | 52 50 54 f | 52 51 54 a | 55 54 55 a | 55 54 55 a |
| Ethiopia | 41 39 43 a | 41 39 42 a | 42 40 43 f | 42 — — c | 41 40 43 a | 45 44 47 a | 45 44 47 a |
| Kenya | 55 53 57 a | 57 55 59 a | 58 56 60 f | 58 56 60 f | 59 57 61 a | 59 57 61 a | 59 57 61 a |
| Lesotho | 52 48 57 a | 55 50 59 a | 51 48 54 b | 56 51 60 f | 56 52 61 a | 57 52 61 a | 57 52 61 a |
| Madagascar | 51 49 52 a | 53 51 54 a | 53 52 55 f | 53 52 55 f | 54 52 55 a | 54 53 56 a | 54 53 56 a |
| Malawi | 44 43 45 af | 46 45 47 a | 47 45 47 f | 47 46 48 f | 47 47 48 a | 48 47 48 a | 48 47 48 a |
| Mauritius | 66 63 68 af | 67 62 69 f | 68 65 70 f | 69 66 71 f | 69 67 72 a | 70 67 72 a | 70 67 72 a |
| Mozambique | 44 42 46 a | 46 44 47 a | 47 45 47 f | 47 45 48 af | 47 45 48 af | 47 46 49 a | 47 46 49 a |
| Namibia | 53 51 54 a | 55 54 56 a | 55 54 56 a | 55 55 58 a | 55 55 58 a | 57 56 58 a | 57 56 58 a |
| Rwanda | 46 44 47 af | 48 46 49 af | 48 46 49 f | 48 47 50 f | 49 47 50 a | 49 48 51 a | 49 48 51 a |
| Sao Tome | 62 — — a | 62 — — a | 62 — — a | 64 — — f | 64 — — f | 64 — — f | 64 — — f |
| Seychelles | 66 — — f | 69 — 74 f | 70 62 — f | 70 — — cf | 71 68 75 a | 71 67 74 f | 71 67 74 f |
| Somalia | 43 41 44 a | 44 42 46 a | 44 42 46 a | 45 43 46 f | 45 44 47 a | 46 44 47 a | 46 44 47 a |
| Swaziland | 51 49 54 a | 54 53 56 a | 54 53 56 a | 55 53 57 f | 56 54 58 a | 56 54 58 a | 56 54 58 a |
| Tanzania | 50 48 52 af | 52 50 54 af | 53 51 54 f | 53 51 55 f | 53 52 55 a | 54 52 55 a | 54 52 55 a |
| Uganda | 49 47 50 af | 50 48 52 a | 51 49 52 f | 52 — — cf | 51 50 53 a | 52 50 53 a | 52 50 53 a |
| Zambia | 50 49 52 a | 52 51 54 a | 53 51 55 f | 53 52 54 f | 54 53 55 a | 54 53 55 a | 54 53 55 a |
| Zimbabwe | 55 53 57 af | 57 55 59 af | 57 55 59 af | 58 55 60 f | 59 57 60 a | 59 57 61 a | 59 57 61 a |

Sources: a) Statistics on Children in UNICEF-Assisted Countries (1990-91)

b) UNICEF Annual Reports 1990

c) The State of the World's Children (1988-91)

d) World Development Report (1987-90)

e) Sub-Saharan Africa: From Crisis to Sustainable Growth

f) Regional Information System data (from UNICEF country offices)

g) UNESCO Statistical Yearbook 1990

Symbols:

* From a year other than the year shown

() Less than half the unit shown

+ Estimate

Total Fertility Rate

| | 1980 | 1985 | 1986 | 1987 | 1988 | 1989 | 1990 |
|------------|-------|-------|-------|-------|--------|--------|-------|
| Angola | 6.4 a | 6.4 a | 6.4 c | 6.4 c | 6.4 ac | 6.4 c | |
| Botswana | 6.6 a | 6.4 a | 6.5 c | 6.1 c | 6.2 ac | 7.1 c | |
| Burundi | 6.4 a | 6.4 a | 6.4 c | 6.2 c | 6.3 a | 6.8 c | |
| Comoros | 6.3 a | 6.2 a | | | 6.2 a | 6.6 b | 6.6 b |
| Ethiopia | 6.5 a | 6.1 a | 6.7 c | 6.2 c | 6.2 a | 6.9 c | |
| Kenya | 8.1 a | 8.1 a | 8.0 c | 7.9 c | 8.1 a | 6.7 bc | |
| Lesotho | 5.8 a | 5.8 a | 5.8 c | 5.7 c | 5.8 a | 5.8 c | |
| Madagascar | 6.6 a | 6.6 a | 6.1 c | 6.6 c | 6.6 a | 6.6 c | |
| Malawi | 7.0 a | 7.0 a | 7.0 c | 7.0 c | 7.0 a | 7.6 c | 7.6 b |
| Mauritius | 2.7 a | 2.2 a | 2.5 c | 1.9 c | 1.9 a | 1.9 c | |
| Mozambique | 6.5 a | 6.5 a | 6.1 c | 6.3 c | 6.4 a | 6.4 c | |
| Namibia | 6.1 a | 6.1 a | | | 6.1 a | 6.1 c | |
| Rwanda | 8.5 a | 8.4 a | 7.4 c | 8.2 c | 8.3 a | 8.2 c | |
| Sao Tome | | | | | | | |
| Seychelles | 3.4 a | 3.4 a | | | | | |
| Somalia | 6.6 a | 6.6 a | 6.6 c | 6.6 c | 6.6 a | 6.6 c | |
| Swaziland | 6.5 a | 6.5 a | | | 6.5 a | | |
| Tanzania | 7.1 a | 7.1 a | 7.1 c | 7.1 c | 7.1 a | 7.1 c | |
| Uganda | 6.9 a | 6.9 a | 6.9 c | 6.9 c | 6.9 a | 7.3 c | |
| Zambia | 7.2 a | 7.2 a | 6.8 c | 7.1 c | 7.2 a | 7.2 c | |
| Zimbabwe | 6.4 a | 6.0 a | 6.6 c | 5.6 c | 5.8 a | 5.7 c | |

Sources:

- a) Statistics on Children in UNICEF-Assisted Countries (1990-91)
- b) UNICEF Annual Reports 1990
- c) The State of the World's Children (1988-91)
- d) World Development Report (1987-90)
- e) Sub-Saharan Africa: From Crisis to Sustainable Growth
- f) Regional Information System data (from UNICEF country offices)
- g) UNESCO Statistical Yearbook 1990

Symbols:

- * From a year other than the year shown
- (.) Less than half the unit shown
- + Estimate

Contraceptive Prevalence Rate (%)

| | 1980 | 1985 | 1986 | 1987 | 1988 | 1989 | 1990 |
|------------|-------|--------|-------|-------|-------|------|------|
| Angola | 1 a | 1 c | 1 c | | | | |
| Botswana | | 28 a* | | 29 b | | | |
| Burundi | 1 c | 1 c* | | 7 a | 33 b | | |
| Comoros | | | | | | | |
| Ethiopia | 2 ac | | | | | | |
| Kenya | 7 a* | 17 ac* | | | | 27 a | |
| Lesotho | 5 ac* | 5 b* | | | | | |
| Madagascar | | | | | | | |
| Malawi | 1 a* | 7 a* | | | 6 b | | |
| Mauritius | | 75 a | 75 b | 75 b | | | |
| Mozambique | | | | 4 a | | | |
| Namibia | | | | 18 b* | | 18 a | |
| Rwanda | | 10 c* | 10 a* | | | | |
| Sao Tome | | | | 10 a* | | 9 f | |
| Seychelles | | | | | | | |
| Somalia | | | | | | | |
| Swaziland | 1 a* | 1 c* | 1 c* | 17 b | 1 a* | | |
| Tanzania | 1 a* | | | 8 ab | 17 a* | | |
| Uganda | 1 a* | | | 4 b | | | |
| Zambia | 1 a* | 1 b* | | | 5 a | | |
| Zimbabwe | 14 a* | 38 a* | | | 43 a | | |

Sources:

- a) Statistics on Children in UNICEF-Assisted Countries (1990-91)
 b) UNICEF Annual Reports 1990
 c) The State of the World's Children (1988-91)
 d) World Development Report (1987-90)
 e) Sub-Saharan Africa: From Crisis to Sustainable Growth
 f) Regional Information System data (from UNICEF country offices)
 g) UNESCO Statistical Yearbook 1990

Symbols: * From a year other than the year shown
 (.) Less than half the unit shown
 + Estimate

Urban Population (% total)

| | 1980 | 1985 | 1986 | 1987 | 1988 | 1989 | 1990 |
|------------|-------|--------|-------|-------|-------|-------|------|
| Angola | 21 af | 25 af | 25 f | 26 cf | 27 ac | 28 a | |
| Botswana | 15 a | 19 a | 20 c | 21 c | 22 ac | 26 a | |
| Burundi | 4.1 a | 5.6 a | 6 cf | 6 cf | 6.6 a | 5 a | |
| Comoros | 23 af | 25 af | 26 f | 26 f | 27 a | 27 a | |
| Ethiopia | 11 af | 12 af | 12 f | 12 cf | 12 a | 13 a | |
| Kenya | 16 af | 20 af | 20 f | 22 cf | 22 a | 23 a | |
| Lesotho | 14 af | 17 acf | 17 f | 18 cf | 19 a | 20 a | |
| Madagascar | 19 af | 22 af | 22 cf | 23 cf | | 23 a | |
| Malawi | 9.7 a | 12 af | 13 cf | 13 cf | | 12 a | |
| Mauritius | 43 af | 42 af | 42 cf | 42 cf | 42 af | 41 ab | |
| Mozambique | 13 a | 19 a | | 23 c | 24 a | 25 a | |
| Namibia | 23 a | 25 a | | | | 27 a | |
| Rwanda | 5 af | 6 f | 7 cf | 7 cf | 7.1 a | 7 a | |
| Sao Tome | 33 af | 38 f | 38 f | | | | |
| Seychelles | 43 af | 52 f | 53 f | | | | |
| Somalia | 29 a | 33 a | 35 cf | 34 cf | 35 a | 36 a | |
| Swaziland | 20 af | 26 af | 28 f | 29 f | 30 a | 32 a | |
| Tanzania | 17 af | 24 ac | 24 f | 28 cf | 30 a | 31 a | |
| Uganda | 8.7 a | 9.4 a | 10 f | 10 cf | 10 a | 10 ab | |
| Zambia | 43 af | 50 af | 51 cf | 52 cf | 53 a | | |
| Zimbabwe | 22 af | 25 af | 25 cf | 26 cf | 26 a | 27 a | |

Sources:

- a) Statistics on Children in UNICEF-Assisted Countries (1990-91)
- b) UNICEF Annual Reports 1990
- c) The State of the World's Children (1988-91)
- d) World Development Report (1987-90)
- e) Sub-Saharan Africa: From Crisis to Sustainable Growth
- f) Regional Information System data (from UNICEF country offices)
- g) UNESCO Statistical Yearbook 1990

Symbols:

- * From a year other than the year shown
- (.) Less than half the unit shown
- + Estimate

Urban Population in Largest City / In Cities Over 500,000 (%)

| | 1980 | |
|------------|------|------|
| | 64 | 64 d |
| Angola | 64 | d |
| Botswana | | |
| Burundi | — | 0 d |
| Comoros | | |
| Ethiopia | 37 | 37 d |
| Kenya | 57 | 57 d |
| Lesotho | | |
| Madagascar | 36 | 36 d |
| Malawi | 19 | 0 d |
| Mauritius | | |
| Mozambique | 83 | 83 d |
| Namibia | | |
| Rwanda | — | 0 d |
| Sao Tome | | |
| Seychelles | | |
| Somalia | 34 | 0 d |
| Swaziland | | |
| Tanzania | 50 | 50 d |
| Uganda | 52 | 52 d |
| Zambia | 35 | 35 d |
| Zimbabwe | 50 | 50 d |

Symbols: * From a year other than the year shown
(.) Less than half the unit shown
+ Estimate

Population Annual Growth Rate (%) (total/urban)

| | 1980-1988 | |
|------------|------------|------------|
| | 1965-1980 | 1980-1988 |
| Angola | 2.8 6.4 a | 2.6 5.7 a |
| Botswana | 3.5 15.4 a | 3.6 8.2 a |
| Burundi | 1.9 1.8 a | 2.8 8.9 a |
| Comoros | 3.3 4.3 a | 3.1 4.9 a |
| Ethiopia | 2.7 6.6 a | 1.8 4.0 a |
| Kenya | 3.6 9.0 a | 4.1 8.2 a |
| Lesotho | 2.3 14.6 a | 2.8 7.0 a |
| Madagascar | 2.5 5.7 a | 3.1 6.1 a |
| Malawi | 2.9 7.8 a | 3.2 7.7 a |
| Mauritius | 1.6 4.0 a | 1.5 1.3 a |
| Mozambique | 2.5 11.8 a | 2.6 10.2 a |
| Namibia | | 3.1 5.6 a |
| Rwanda | 3.3 6.3 a | 3.4 7.9 a |
| Sao Tome | | — 2.8 a* |
| Seychelles | | 0.6 — a* |
| Somalia | 2.7 6.1 a | 3.5 5.9 a |
| Swaziland | | 3.4 8.9 a |
| Tanzania | 3.3 8.7 a | 3.7 11.2 a |
| Uganda | 2.9 4.1 a | 3.4 5.2 a |
| Zambia | 3.1 7.1 a | 3.9 6.7 a |
| Zimbabwe | 3.1 7.5 a | 3.1 5.5 a |

Sources: a) Statistics on Children in UNICEF-Assisted Countries (1990-91)
b) UNICEF Annual Reports 1990
c) The State of the World's Children (1988-91)
d) World Development Report (1987-90)
e) Sub-Saharan Africa: From Crisis to Sustainable Growth
f) Regional Information System data (from UNICEF country offices)
g) UNESCO Statistical Yearbook 1990

Female-Headed Households (total/urban/rural)

| | 1980 | 1985 | 1986 | 1987 | 1988 | 1989 | 1990 |
|------------|------|------------|------|------------|-----------|----------|------|
| Angola | | | | | | | |
| Botswana | | 46 24 76 f | | | | | |
| Burundi | | | | | | | |
| Comoros | | | | | | | |
| Ethiopia | | | | 30 25 34 f | | | |
| Kenya | | | | | | | |
| Lesotho | | | | | | | |
| Madagascar | | | | | | | |
| Malawi | | 28 — 30 f | | | | | |
| Mauritius | | 19 — — f* | | | | | |
| Mozambique | | | | | | | |
| Namibia | | | | | | | |
| Rwanda | | | | | | | |
| Sao Tome | | | | | | 20 — — f | |
| Seychelles | | | | | | | |
| Somalia | | | | | | | |
| Swaziland | | | | | | | |
| Tanzania | | | | 15 — — f | | | |
| Uganda | | | | | | | |
| Zambia | | | | | 36 — — b* | | |
| Zimbabwe | | | | | | | |

Sources:

- a) Statistics on Children in UNICEF-Assisted Countries (1990-91)
- b) UNICEF Annual Reports 1990
- c) The State of the World's Children (1988-91)
- d) World Development Report (1987-90)
- e) Sub-Saharan Africa: From Crisis to Sustainable Growth
- f) Regional Information System data (from UNICEF country offices)
- g) UNESCO Statistical Yearbook 1990

Symbols: *
(.)
+

From a year other than the year shown
Less than half the unit shown
Estimate

GNP Per Capita (U.S. dollars)

| | 1980 | 1985 | 1986 | 1987 | 1988 | 1989 | 1990 |
|------------|--------|--------|---------|--------|--------|--------|------|
| Angola | 470 cf | 470 f | 470 f | 1130 c | | 620 a | |
| Botswana | | 840 c | 840 c | 1050 c | 1010 d | | |
| Burundi | 200 f | 230 cf | 240 cf | 250 c | 240 d | | |
| Comoros | 300 f | 240 cf | 320 cf | 370 a | 440 d | | |
| Ethiopia | 140 f | 110 cf | 120 cf | 130 a | 120 d | 116 b | |
| Kenya | 420 f | 290 cf | 300 cf | 330 a | 370 d | | |
| Lesotho | | 470 c | 370 c | 370 a | 420 d | | |
| Madagascar | 360 f | 240 cf | 230 cf | 210 af | 190 d | | |
| Malawi | 230 f | 170 cf | 160 cf | 160 a | 170 d | | |
| Mauritius | 1060 f | 1090 c | 1200 cf | 1490 a | 1800 d | 1735 f | |
| Mozambique | | 160 c | 210 c | 170 a | 100 d | | |
| Namibia | | | | | | | |
| Rwanda | 200 f | 280 cf | 290 cf | 300 a | 320 d | | |
| Sao Tome | | 320 cf | 340 cf | 280 a | 490 d | 358 f | |
| Seychelles | 1770 f | | 2750 f | 3120 a | | | |
| Somalia | 130 f | 280 cf | 280 cf | 290 a | 170 d | | |
| Swaziland | 680 f | 670 cf | 690 cf | 700 a | | | |
| Tanzania | | 290 c | 250 c | 180 a | 166 d | | |
| Uganda | 300 f | 230 cf | 230 cf | 260 af | 280 d | | |
| Zambia | 156 f | 390 cf | 300 cf | 250 a | 290 d | | |
| Zimbabwe | 630 f | 680 cf | 620 cf | 580 a | 650 d | | |

Sources:

- a) Statistics on Children in UNICEF-Assisted Countries (1990-91)
 b) UNICEF Annual Reports 1990
 c) The State of the World's Children (1988-91)
 d) World Development Report (1987-90)
 e) Sub-Saharan Africa: From Crisis to Sustainable Growth
 f) Regional Information System data (from UNICEF country offices)
 g) UNESCO Statistical Yearbook 1990

Symbols:

- * From a year other than the year shown
 (.) Less than half the unit shown
 + Estimate

GNP Per Capita Annual Growth Rate (%)

| | GNP Per Capita Annual Growth Rate (%) | | Inflation Rate | |
|------------|---------------------------------------|-----------|----------------|-----------|
| | 1965-1980 | 1980-1988 | 1965-1980 | 1980-1987 |
| Angola | -9.8 c* | | 22 c* | |
| Botswana | | 6.7 c | | 8 ac |
| Burundi | 2.4 a | 0.1 c | 8 a | 8 a |
| Comoros | | | | 7 a |
| Ethiopia | 0.4 a | -0.4 c | 3 a | 3 a |
| Kenya | 3.1 a | -0.2 c | 7 a | 10 a |
| Lesotho | 6.8 a | -0.7 c | 8 a | 12 a |
| Madagascar | -0.4 a | -3.4 c | 8 a | 17 a |
| Malawi | 3.2 a | -0.6 c | 7 a | 12 a |
| Mauritius | 3.7 a | 5.1 c | 11 a | 8 a |
| Mozambique | | -7.5 c | | 27 a |
| Namibia | | | 12 f | 13 f+ |
| Rwanda | 1.6 a | -1.5 c | 12 a | 5 a |
| Sao Tome | 3.3 a | -6.0 a* | | 5 a |
| Seychelles | 4.6 a | 1.3 a* | 12 a | 4 a |
| Somalia | -0.1 a | -2.2 c | 10 a | 38 a |
| Swaziland | 3.7 a | 1.2 a* | 9 a | 10 a |
| Tanzania | 0.8 a | -1.3 c | 10 a | 25 a |
| Uganda | -2.2 a | -2.5 c | 22 a | 95 a |
| Zambia | -1.2 a | -4.9 c | 6 a | 29 a |
| Zimbabwe | 1.7 a | -1.0 c | 6 a | 12 a |

Sources:

- a) Statistics on Children in UNICEF-Assisted Countries (1990-91)
- b) UNICEF Annual Reports 1990
- c) The State of the World's Children (1988-91)
- d) World Development Report (1987-90)
- e) Sub-Saharan Africa: From Crisis to Sustainable Growth
- f) Regional Information System data (from UNICEF country offices)
- g) UNESCO Statistical Yearbook 1990

Symbols:

- * From a year other than the year shown
- (.) Less than half the unit shown
- + Estimate

Consumer Price Index (1980 = 100)

| | 1980 | 1985 | 1986 | 1987 | 1988 | 1989 | 1990 |
|------------|-------|-------|--------|--------|---------|--------|------|
| Angola | | | | | | | |
| Botswana | 100 f | 165 f | | | | | |
| Burundi | 100 f | 155 f | 157 f | | | | |
| Comoros | | | | | | | |
| Ethiopia | 100 f | 144 f | 130 f | | | | |
| Kenya | | | | | | | |
| Lesotho | 100 f | 193 f | 232 f | | | | |
| Madagascar | 100 f | 249 f | 291 f | | | | |
| Malawi | 100 f | 184 f | 211 f | | | | |
| Mauritius | 100 f | 154 f | 157 f | | | | |
| Mozambique | | | | | | | |
| Namibia | | | | | | | |
| Rwanda | 100 f | 137 f | 139 f | | | | |
| Sao Tome | | | | | | | |
| Seychelles | | | | | | | |
| Somalia | | | | | | | |
| Swaziland | 100 f | 205 f | 225 f | | | | |
| Tanzania | 100 f | 374 f | 480 f | | | | |
| Uganda | 100 f | 925 f | 2316 f | 643 f | 843 f | 1061 f | |
| Zambia | 100 f | 253 f | 379 f | 6419 f | 16779 f | | |
| Zimbabwe | 100 f | 201 f | 230 f | | | | |

Sources:

- a) Statistics on Children in UNICEF-Assisted Countries (1990-91)
- b) UNICEF Annual Reports 1990
- c) The State of the World's Children (1988-91)
- d) World Development Report (1987-90)
- e) Sub-Saharan Africa: From Crisis to Sustainable Growth
- f) Regional Information System data (from UNICEF country offices)
- g) UNESCO Statistical Yearbook 1990

Symbols:

- * From a year other than the year shown
- (.) Less than half the unit shown
- + Estimate

Population in Absolute Poverty (%) (total/urban/rural)

| | 1980 | 1985 | 1986 | 1987 | 1988 | 1989 | 1990 |
|------------|------------|------------|-----------|-----------|-------------|----------|------|
| Angola | — 40 55 af | — 40 55 f | | | | | |
| Botswana | — 55 85 a* | | | | | | |
| Burundi | | | | | | | |
| Comoros | | | | | | | |
| Ethiopia | — 60 65 a* | — 60 65 f | — 60 65 f | | | | |
| Kenya | — 10 55 a* | — 10 55 f | — 10 55 f | | | | |
| Lesotho | — 50 55 a* | | | | | | |
| Madagascar | — 50 50 c* | — 50 50 f | — 50 50 f | — 50 50 f | | | |
| Malawi | — 25 85 a* | | | | | | |
| Mauritius | 12 12 12 f | 12 12 12 f | | | | | |
| Mozambique | | | | | 62 50 64 f* | | |
| Namibia | | | | | | | |
| Rwanda | — 30 90 a* | | | | | | |
| Sao Tome | | | | | | 33 — — f | |
| Seychelles | | | | | | | |
| Somalia | — 40 70 c* | — 40 70 c* | — 40 70 f | — 7 33 af | | | |
| Swaziland | — 45 50 af | | 30 — — f | | | | |
| Tanzania | — 15 25 a* | — 15 25 f | | | | | |
| Uganda | | | | | | | |
| Zambia | 25 — — f | 25 — — f | 25 — — f | | | | |
| Zimbabwe | 39 — — b* | | | 42 — — f | | | |

Sources:

- a) Statistics on Children in UNICEF-Assisted Countries (1990-91)
- b) UNICEF Annual Reports 1990
- c) The State of the World's Children (1988-91)
- d) World Development Report (1987-90)
- e) Sub-Saharan Africa: From Crisis to Sustainable Growth
- f) Regional Information System data (from UNICEF country offices)
- g) UNESCO Statistical Yearbook 1990

Symbols:

- * From a year other than the year shown
- (.) Less than half the unit shown
- + Estimate

Household Income Share (top 20% /bottom 40%)

| | 1980 | 1985 | 1986 | 1987 | 1988 | 1989 | 1990 |
|------------|------|------|------|------|------|------|------|
| Angola | | | | | | | |
| Botswana | 59 | 9 | c | | | | |
| Burundi | | | | | | | |
| Comoros | | | | | | | |
| Ethiopia | | | | | | | |
| Kenya | 60 | 9 | a* | | | | |
| Lesotho | | | | | | | |
| Madagascar | | | | | | | |
| Malawi | | | | | | | |
| Mauritius | 50 | 14 | a | 46 | 12 | a | |
| Mozambique | | | | | | | |
| Namibia | | | | | | | |
| Rwanda | | | | | | 71 | 3 |
| Sao Tome | | | | | | f+ | |
| Seychelles | | | | | | | |
| Somalia | | | | | | | |
| Swaziland | | | | | | | |
| Tanzania | | | | | | | |
| Uganda | | | | | | | |
| Zambia | 61 | 11 | a* | | | | |
| Zimbabwe | | | | | | | |

Sources:

- a) Statistics on Children in UNICEF-Assisted Countries (1990-91)
- b) UNICEF Annual Reports 1990
- c) The State of the World's Children (1988-91)
- d) World Development Report (1987-90)
- e) Sub-Saharan Africa: From Crisis to Sustainable Growth
- f) Regional Information System data (from UNICEF country offices)
- g) UNESCO Statistical Yearbook 1990

Symbols:

- * From a year other than the year shown
- (.) Less than half the unit shown
- + Estimate

Government Expenditure on Health/Education/Defence (% of total expenditure)

| | 1980 | 1985 | 1986 | 1987 | 1988 | 1989 | 1990 |
|------------|------------|------------|------------|------------|-----------|-----------|------------|
| Angola | | | 6 15 34 f | 6 15 34 a | | | |
| Botswana | 5 22 10 d | 5 18 7 e | 5 18 6 c | 6 18 8 acd | 5 17 10 b | 4 17 10 b | |
| Burundi | 6 23 10 f | 6 16 18 f | | 4 16 16 a | | | 9 24 8 b |
| Comoros | | | | 7 25 4 a | | | |
| Ethiopia | 3 9 — e | | 5 15 36 af | 5 15 36 f | | — — 67 b | |
| Kenya | 6 20 16 f | 7 20 13 cf | 6 20 9 c | 7 23 7 a | | 5 19 8 b | |
| Lesotho | | 6 15 12 c | 7 16 10 cf | 7 16 10 a | | | |
| Madagascar | 4 9 4 b | 3 4 9 f | 3 4 9 f | 6 17 10 f | 5 17 10 f | | |
| Malawi | 6 16 13 e | 8 12 6 cf | 7 11 6 cf | 7 11 7 ae | | | |
| Mauritius | 7 17 1 a | 8 14 1 c | 8 13 1 c | 8 12 1 ae | 9 15 — f | 9 16 — f | |
| Mozambique | | 7 16 — c | | 5 10 35 a | 5 10 — f | | |
| Namibia | | — — 10 b* | | 14 18 5 b* | | | 14 18 5 a* |
| Rwanda | 5 19 13 e | | | 5 26 — a | | | |
| Sao Tome | 13 9 — f | 11 — — af | 13 — — f | 11 — — f | 8 — — f | — 5 — f | |
| Seychelles | 9 9 — a* | | | | | | |
| Somalia | 3 8 25 e | 1 3 21 f | 7 1 12 f | 1 1 12 f | 1 2 36 a | | |
| Swaziland | 7 25 9 e | | | 9 25 5 e | 9 27 7 b | | |
| Tanzania | 6 13 9 e | 5 7 14 c | 5 7 14 c | 6 8 16 ae | 6 11 9 f | 6 12 7 f | |
| Uganda | 5 15 25 ae | 3 12 17 cf | 2 15 26 cf | 2 15 26 ae | 3 12 25 f | | |
| Zambia | 6 11 — e | 7 16 — cf | 5 8 — ae | | | | |
| Zimbabwe | 5 16 25 e | 6 20 16 cf | 6 21 15 cf | 6 20 14 ae | | | |

Sources:

- a) Statistics on Children in UNICEF-Assisted Countries (1990-91)
- b) UNICEF Annual Reports 1990
- c) The State of the World's Children (1988-91)
- d) World Development Report (1987-90)
- e) Sub-Saharan Africa: From Crisis to Sustainable Growth
- f) Regional Information System data (from UNICEF country offices)
- g) UNESCO Statistical Yearbook 1990

Symbols:

- * From a year other than the year shown
- (.) Less than half the unit shown
- + Estimate

Public Current Expenditure on Education at Primary/Secondary/Tertiary Levels (% of total expenditure on education)

| | 1980 | 1985 | 1986 | 1987 | 1988 | 1989 | 1990 |
|------------|-------------|------------|-------------|------------|------------|------|------|
| Angola | | — — 5 g | | | | | |
| Botswana | | | 38 35 16 g | | | | |
| Burundi | | 45 32 20 g | | | 39 42 14 g | | |
| Comoros | | | 39 31 21 g | | | | |
| Ethiopia | 42 30 19 g | | 52 28 14 g | 53 28 13 g | | | |
| Kenya | | 60 18 12 g | | 62 17 13 g | 42 34 18 g | | |
| Lesotho | 39 33 22 g | | | 36 32 24 g | 55 36 — g | | |
| Madagascar | 42 26 28 g | | | | 44 19 17 g | | |
| Malawi | 39 16 30 g | 42 27 27 g | | 47 13 21 g | | | |
| Mauritius | 44 37 8 g | | | 44 37 7 g | 43 39 7 g | | |
| Mozambique | | | | | | | |
| Namibia | | | | | | | |
| Rwanda | 67 20 10 g | | | 68 16 14 g | | | |
| Sao Tome | | | 68 15 12 g | | | | |
| Seychelles | | | 50 27 — g | | | | |
| Somalia | | | 28 54 — g | | 29 47 — g | | |
| Swaziland | 46 34 11 g | | | | | | |
| Tanzania | | | | 38 28 22 g | 34 29 21 g | | |
| Uganda | 16 58 18 g* | | | 59 23 14 g | 58 27 12 g | | |
| Zambia | 45 26 18 g | | 44 36 12 g* | 20 61 13 g | | | |
| Zimbabwe | 67 21 8 g | 58 28 9 g | 56 29 9 g | | | | |

Sources:

- a) Statistics on Children in UNICEF-Assisted Countries (1990-91)
 b) UNICEF Annual Reports 1990
 c) The State of the World's Children (1988-91)
 d) World Development Report (1987-90)
 e) Sub-Saharan Africa: From Crisis to Sustainable Growth
 f) Regional Information System data (from UNICEF country offices)
 g) UNESCO Statistical Yearbook 1990

Symbols:

- * From a year other than the year shown
 (.) Less than half the unit shown
 + Estimate

Official Development Assistance (U.S. millions /% GNP of recipient)

| | 1980 | 1985 | 1986 | 1987 | 1988 | 1989 | 1990 |
|------------|-----------|------------|------------|-----------|----------|---------|------|
| Angola | 56e 2 a | 102 — e | 162 — e | 168 — e | 157 — c | | |
| Botswana | 106 13 a | 96d 14 c | 102 10.4 c | 154 10 ac | 150 12 c | | |
| Burundi | 117 14 a | 142 13.7 c | 187 15.7 c | 192 15 a | 183 15 c | | |
| Comoros | 43 — e | 47 — e | 46 — e | 53 — e | | | |
| Ethiopia | 212 5 a | 715 15.1 e | 642 11.5 c | 635 12 a | 912 16 c | | |
| Kenya | 397 6 a | 438 7.9 e | 458 6.9 c | 565 7 a | 808 10 c | | |
| Lesotho | 94 15 a | 94 16.5 e | 88 16.1 c | 108 29 a | 108 16 c | | |
| Madagascar | 230 8 a | 182 8.2 c | 316 12.7 c | 327 16 a | 304 15 c | | |
| Malawi | 143 12 a | 113 11 c | 230 17.5 c | 280 23 a | 335 25 c | | |
| Mauritius | 33 3 a | 29 2.8 c | 56 4.2 c | 65 4 a | 59 3 c | | |
| Mozambique | 169 — a | 300 9.2 c | 422 9.8 c | 649 41 a | 882 57 c | | |
| Namibia | | | | 17 — a | 21 — c | | |
| Rwanda | 155 13 a | 181 10.7 c | 211 11.5 c | 243 12 a | 247 12 c | | |
| Sao Tome | 4e 8 f | 12e 9.2 f | 12e 9.8 f | 18 — e | | | |
| Seychelles | 21e 8 f | 22e 9.2 f | 28e 9.8 f | 24 — e | | | |
| Somalia | 433 39 a | 354 14.5 c | 523 27.8 c | 580 57 a | 447 46 c | | |
| Swaziland | 30 — e | 25 — e | 35 — e | 45 — e | | | |
| Tanzania | 679e 14 f | 487 7.9 c | 681 15.2 c | 882 25 a | 975 26 c | | |
| Uganda | 114 10 a | 182e 3.3 f | 198e 5.7 f | 276 7 a | 353 8 c | 382 8 b | |
| Zambia | 310 10 a | 329 15.4 c | 464 31.2 c | 429 21 a | 477 22 c | | |
| Zimbabwe | 164 3 a | 237 4.2 c | 225 4.2 c | 295 5 a | 270 4 c | | |

Sources:

- a) Statistics on Children in UNICEF-Assisted Countries (1990-91)
- b) UNICEF Annual Reports 1990
- c) The State of the World's Children (1988-91)
- d) World Development Report (1987-90)
- e) Sub-Saharan Africa: From Crisis to Sustainable Growth
- f) Regional Information System data (from UNICEF country offices)
- g) UNESCO Statistical Yearbook 1990

Symbols:

- * From a year other than the year shown
- (.) Less than half the unit shown
- + Estimate

Debt Service (% exports / % GNP)

| | 1980 | 1985 | 1986 | 1987 | 1988 | 1989 | 1990 |
|------------|------|------|------|------|------|------|------------|
| Angola | | | | 22 | — a | | |
| Botswana | 1.7 | 1.5 | d | 4 | 5.7 | d | |
| Burundi | 6.7 | 0.7 | e | 38.5 | 3.6 | e | |
| Comoros | 2.1 | 0.2 | e | 5.2 | 0.6 | e | |
| Ethiopia | 5.8 | 0.8 | e | 28.4 | 3.4 | e | |
| Kenya | 12.3 | 3.7 | e | 28.8 | 6.5 | e | |
| Lesotho | 1 | — a | | 4.4 | 2.3 | e | |
| Madagascar | 11.1 | 1.8 | e | 27.7 | — cf | | |
| Malawi | 21.5 | 5.9 | e | 35.5 | 7.7 | e | |
| Mauritius | 5.8 | 3 | e | 23.3 | 6 | e | |
| Mozambique | | | | 6.1 | 4.3 | e | |
| Namibia | | | | 7.3 | — cf | | |
| Rwanda | 2.4 | 0.4 | e | 11.3 | 1 | e | |
| Sao Tome | 4.4 | 2.2 | e | 41.5 | 15.3 | e | |
| Seychelles | 0.3 | 0.2 | e | — | 4.2 | e | |
| Somalia | 4.4 | 1.4 | e | 8.3 | 0.9 | e | |
| Swaziland | 2.7 | 2.3 | e | 6.1 | 5.2 | e | |
| Tanzania | 10.9 | 1.5 | e | 18.5 | 2.9 | e | |
| Uganda | 6.7 | 1.3 | e | 19.5 | 1.9 | e | |
| Zambia | 17.8 | 8 | e | 13.5 | 6.7 | e | |
| Zimbabwe | 2.5 | 0.8 | e | 23.2 | 6.8 | e | |
| | | | | 7.8 | 2 | d | |
| | | | | | | | 14.7 — b |
| | | | | | | | 3.7 5.2 d |
| | | | | | | | 25.1 3.3 d |
| | | | | | | | 37.4 4.3 d |
| | | | | | | | 19.4 4.4 d |
| | | | | | | | 5.2 3 d |
| | | | | | | | 39 9.3 d |
| | | | | | | | 17.2 4.1 d |
| | | | | | | | 10.1 7.4 d |
| | | | | | | | 7.8 2 d |
| | | | | | | | 9.6 0.7 d |
| | | | | | | | 4.9 0.4 d |
| | | | | | | | 17.1 2.9 d |
| | | | | | | | 14 1 d |
| | | | | | | | 14.2 4.9 d |
| | | | | | | | 24.8 7.3 d |
| | | | | | | | 62 — b |

Sources:

- a) Statistics on Children in UNICEF-Assisted Countries (1990-91)
b) UNICEF Annual Reports 1990
c) The State of the World's Children (1988-91)
d) World Development Report (1987-90)
e) Sub-Saharan Africa: From Crisis to Sustainable Growth
f) Regional Information System data (from UNICEF country offices)
g) UNESCO Statistical Yearbook 1990

Symbols:

- * From a year other than the year shown
() Less than half the unit shown
+ Estimate

SELECTED DEFINITIONS

| | |
|--|--|
| Under five mortality rate: | Annual number of deaths of children under five years of age per 1,000 live births. |
| Infant mortality rate: | Annual number of deaths of infants under one year of age per 1,000 live births. |
| Low birth weight: | 2,500 grammes or less. |
| Breast-feeding: | Percentage of mothers either wholly or partly breast-feeding. |
| Malnutrition: | Moderate and severe—below minus two standard deviations from the median weight for age of the reference population. Severe—below minus three standard deviations from median weight for age of the reference population. |
| Wasting: | Below minus two standard deviations from median weight for height of reference population. |
| Stunting: | Below minus two standard deviations from median height for age of reference population. |
| Calorie intake: | The calorie equivalent of the food supplies in an economy divided by the population. |
| Access to health services: | Percentage of population that can reach appropriate local health services by the local means of transport in no more than one hour. |
| Births attended: | Percentage of births attended by physicians, midwives, trained primary health care workers or trained traditional birth attendants. |
| Maternal mortality rate: | Annual number of deaths of women from pregnancy related causes per 100,000 live births. |
| ORT use: | Percentage of all cases of diarrhoea in children under five years of age treated with oral rehydration salts or an appropriate household solution. |
| Adult literacy rate: | Percentage of persons aged fifteen and over who can read and write. |
| Primary and secondary school gross enrolment ratio: | The total number of children enrolled in a schooling level—whether or not they belong in the relevant age group for that level—expressed as a percentage of the total number of children in the relevant age group for that level. |

| | |
|--|--|
| Primary and secondary school net enrolment ratio: | The total number of children enrolled in a schooling level who belong in the relevant age group, expressed as a percentage of the total number of children in that age group. |
| Children completing primary school: | Percentage of the children entering the first grade of primary school who successfully complete that level in due course. |
| Crude death rate: | Annual number of deaths per 1,000 population. |
| Crude birth rate: | Annual number of births per 1,000 population. |
| Life expectancy at birth: | The number of years new-born children would live if subject to the mortality risks prevailing for the cross-section of population at the time of their birth. |
| Fertility rate: | The number of children that would be born per woman, if she were to live to the end of her child-bearing years and bear children at each age in accordance with prevailing age-specific fertility rates. |
| Contraceptive prevalence: | Percentage of married women age 15-49 currently using contraception. |
| Urban population: | Percentage of population living in urban areas as defined according to the national definition used in the more recent population census. |
| GNP per capita: | Calculated according to the <i>World Bank Atlas</i> method. |
| Inflation: | Measured by the growth rate of the GDP implicit deflator. |
| Absolute poverty level: | The income level below which a minimum nutritionally adequate diet plus essential non-food requirements is not affordable. |
| Income share: | Percentage of household income received by the highest 20% and lowest 40% of households. |
| Debt service: | The sum of interest payments and repayments of principal on external public and publicly guaranteed debts. |

GOALS FOR THE YEAR 2000

Reduction of U5MR by one-third of 1990 levels or to 70 per 1,000 live births,
whichever is less

Reduction of IMR by one-third of 1990 levels or to 50 per 1,000 live births,
whichever is less

Reduction of the rate of low birth weight (2.5 kg or less) to less than 10%

Reduction of malnutrition by one-half of 1990 levels

Universal access to safe drinking water

Universal access to adequate sanitation

Universal access of pregnant women to trained attendants during child birth

Reduction of maternal mortality rate by one-half of 1990 levels

High percentage of one year olds fully immunized against diphtheria, pertussis and tetanus
(1985-1990)

Reduction of adult illiteracy by one-half, with emphasis on female literacy

Universal access to basic education

Completion of primary education by at least 80% of primary school age children



CF-RAI-USAA-DPP-LIB-2006-00005

Expanded Number **CF-RAI-USAA-DPP-LIB-2006-00005**

External ID **CHALLENGES-PP 101-158**

Title

**Challenges for children and women in the 1990s: Eastern and Southern Africa in profile.
PDF scan pages 101-158**

Date Created / From Date

Date Registered

Date Closed / To Date

Primary Contact

Home Location **CF-RAF-USAA-DB01-2005-04676 (In Container)**

5/9/2006 at 4:25 PM

5/9/2006 at 4:25 PM

Owner Location **Howard Dale**

Current Location/Assignee **In Container 'CF-RAF-USAA-DB01-2005-04676 (At Home Location: Div of Policy and**

F12: Status Certain? **No**

F13: Record Copy? **No**

d01: In, Out, Internal Rec or Rec Copy

Contained Records
Container

Date Published

Fd3: Doc Type - Format

Da1:Date First Published

Priority

Record Type **A01 DPP-LIB ITEM**

Document Details **Record has no document attached.**

Print Name of Person Submit Image

Signature of Person Submit

Number of images
without cover

Upasana

58